



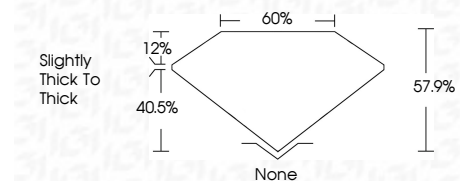
ELECTRONIC COPY

LG809618095
Report verification at igi.org



June 9, 2026
IGI Report Number **LG809618095**
Description **LABORATORY GROWN DIAMOND**
Shape and Cutting Style **OVAL POLYGON STEP CUT**
Measurements **11.89 X 7.72 X 4.47 MM**

GRADING RESULTS
Carat Weight **3.02 CARATS**
Color Grade **E**
Clarity Grade **VVS 2**



ADDITIONAL GRADING INFORMATION
Polish **EXCELLENT**
Symmetry **EXCELLENT**
Fluorescence **NONE**
Inscription(s) **IGI LG809618095**
Comments: This Laboratory Grown Diamond was created by Chemical Vapor Deposition (CVD) growth process. Type IIa



June 9, 2026
IGI Report No. LG809618095
OVAL POLYGON STEP CUT
11.89 X 7.72 X 4.47 MM
3.02 CARATS
E
VVS 2
57.9%
40.5%
Slightly Thick To Thick
None
EXCELLENT
EXCELLENT
NONE
IGI LG809618095
Comments: This Laboratory Grown Diamond was created by Chemical Vapor Deposition (CVD) growth process. Type IIa

LABORATORY GROWN DIAMOND REPORT

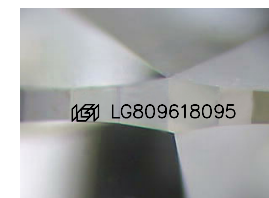
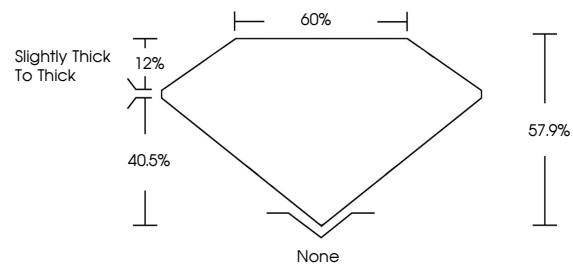
June 9, 2026
IGI Report Number **LG809618095**
Description **LABORATORY GROWN DIAMOND**
Shape and Cutting Style **OVAL POLYGON STEP CUT**
Measurements **11.89 X 7.72 X 4.47 MM**

GRADING RESULTS
Carat Weight **3.02 CARATS**
Color Grade **E**
Clarity Grade **VVS 2**

ADDITIONAL GRADING INFORMATION
Polish **EXCELLENT**
Symmetry **EXCELLENT**
Fluorescence **NONE**
Inscription(s) **IGI LG809618095**

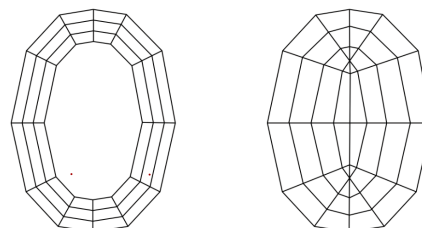
Comments: This Laboratory Grown Diamond was created by Chemical Vapor Deposition (CVD) growth process. Type IIa

PROPORTIONS



Sample Image Used

CLARITY CHARACTERISTICS



KEY TO SYMBOLS

Red symbols indicate internal characteristics.
Green symbols indicate external characteristics.

COLOR

D E F G H I J Faint Very Light Light

CLARITY

FL	IF	VVS ¹⁻²	VS ¹⁻²	SI ¹⁻²	I ¹⁻³
Flawless	Internally Flawless	Very Very Slightly Included	Very Slightly Included	Slightly Included	Included

