



ELECTRONIC COPY

LG809618094
Report verification at igi.org



June 11, 2026
IGI Report Number **LG809618094**
Description **LABORATORY GROWN DIAMOND**
Shape and Cutting Style **MODIFIED NONAGON STEP CUT**
Measurements **13.73 X 8.14 X 4.62 MM**
GRADING RESULTS
Carat Weight **3.71 CARATS**
Color Grade **E**
Clarity Grade **VVS 2**

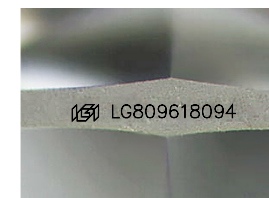
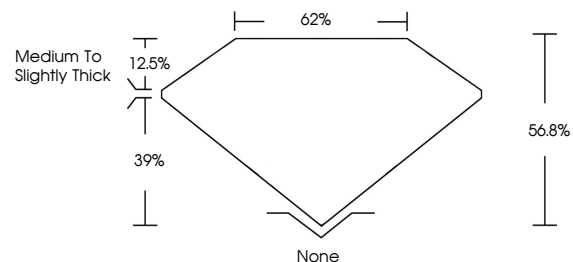
June 11, 2026
IGI Report Number **LG809618094**
Description **LABORATORY GROWN DIAMOND**
Shape and Cutting Style **MODIFIED NONAGON STEP CUT**
Measurements **13.73 X 8.14 X 4.62 MM**

GRADING RESULTS
Carat Weight **3.71 CARATS**
Color Grade **E**
Clarity Grade **VVS 2**

ADDITIONAL GRADING INFORMATION
Polish **EXCELLENT**
Symmetry **EXCELLENT**
Fluorescence **NONE**
Inscription(s) **IGI LG809618094**

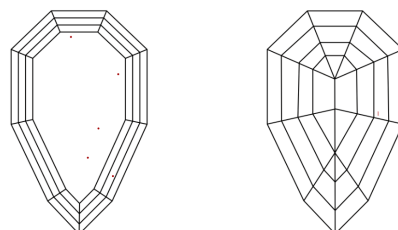
Comments: This Laboratory Grown Diamond was created by Chemical Vapor Deposition (CVD) growth process.
Type IIa

PROPORTIONS



Sample Image Used

CLARITY CHARACTERISTICS



KEY TO SYMBOLS

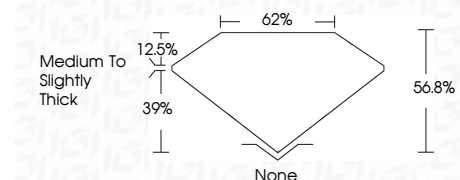
Red symbols indicate internal characteristics.
Green symbols indicate external characteristics.

COLOR

D E F G H I J Faint Very Light Light

CLARITY

FL	IF	VVS ¹⁻²	VS ¹⁻²	SI ¹⁻²	I ¹⁻³
Flawless	Internally Flawless	Very Very Slightly Included	Very Slightly Included	Slightly Included	Included



ADDITIONAL GRADING INFORMATION

Polish **EXCELLENT**
Symmetry **EXCELLENT**
Fluorescence **NONE**
Inscription(s) **IGI LG809618094**
Comments: This Laboratory Grown Diamond was created by Chemical Vapor Deposition (CVD) growth process.
Type IIa



June 11, 2026
IGI Report No **LG809618094**
MODIFIED NONAGON STEP CUT
3.71 CARATS
E
3.71 CARATS
Color Grade **VVS 2**
Depth **56.8%**
Table **62%**
Girdle **Medium to Slightly Thick**
Culet **None**
Polish **EXCELLENT**
Symmetry **EXCELLENT**
Fluorescence **NONE**
Inscription(s) **IGI LG809618094**
Comments: This Laboratory Grown Diamond was created by Chemical Vapor Deposition (CVD) growth process.
Type IIa