



**INTERNATIONAL  
GEMOLOGICAL  
INSTITUTE**

**ELECTRONIC COPY**

**LABORATORY GROWN DIAMOND REPORT**

June 13, 2026  
IGI Report Number **LG809616705**  
Description **LABORATORY GROWN DIAMOND**  
Shape and Cutting Style **ROUND BRILLIANT**  
Measurements **5.74 - 5.79 X 3.55 MM**

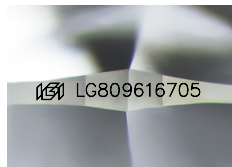
**GRADING RESULTS**

Carat Weight **0.72 CARAT**  
Color Grade **D**  
Clarity Grade **VVS 1**  
Cut Grade **IDEAL**

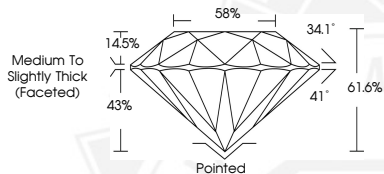
**ADDITIONAL GRADING INFORMATION**

Polish **EXCELLENT**  
Symmetry **EXCELLENT**  
Fluorescence **NONE**  
Inscription(s) **IGI LG809616705**

Comments: This Laboratory Grown Diamond was created by Chemical Vapor Deposition (CVD) growth process. Type IIa



Sample Image Used



June 13, 2026  
IGI Report Number **LG809616705**  
**ROUND BRILLIANT**  
**LABORATORY GROWN DIAMOND**  
**5.74 - 5.79 X 3.55 MM**  
Carat Weight **0.72 CARAT**  
Color Grade **D**  
Clarity Grade **VVS 1**  
Cut Grade **IDEAL**  
Polish **EXCELLENT**  
Symmetry **EXCELLENT**  
Fluorescence **NONE**  
Inscription(s) **IGI LG809616705**  
Comments: This Laboratory Grown Diamond was created by Chemical Vapor Deposition (CVD) growth process. Type IIa



June 13, 2026  
IGI Report Number **LG809616705**  
**ROUND BRILLIANT**  
**LABORATORY GROWN DIAMOND**  
**5.74 - 5.79 X 3.55 MM**  
Carat Weight **0.72 CARAT**  
Color Grade **D**  
Clarity Grade **VVS 1**  
Cut Grade **IDEAL**  
Polish **EXCELLENT**  
Symmetry **EXCELLENT**  
Fluorescence **NONE**  
Inscription(s) **IGI LG809616705**  
Comments: This Laboratory Grown Diamond was created by Chemical Vapor Deposition (CVD) growth process. Type IIa

THIS DOCUMENT WAS PRODUCED WITH THE FOLLOWING SECURITY MEASURES: SPECIAL DOCUMENT PAPER, INK SCREENS, WATERMARK, BACKGROUND DESIGNS, HOLOGRAM AND OTHER SECURITY FEATURES NOT LISTED AND DO EXCEED DOCUMENT SECURITY INDUSTRY GUIDELINES.

For terms & conditions and to verify this report, please visit [www.igi.org](http://www.igi.org)