



ELECTRONIC COPY

LG809615891
Report verification at igi.org



June 13, 2026

IGI Report Number **LG809615891**

Description **LABORATORY GROWN DIAMOND**

Shape and Cutting Style **CUT CORNERED
RECTANGULAR MODIFIED
BRILLIANT**

Measurements **8.77 X 6.15 X 4.42 MM**

GRADING RESULTS

Carat Weight **2.26 CARATS**

Color Grade **FANCY VIVID BLUE**

Clarity Grade **VS 1**

LABORATORY GROWN DIAMOND REPORT

June 13, 2026

IGI Report Number **LG809615891**

Description **LABORATORY GROWN DIAMOND**

Shape and Cutting Style **CUT CORNERED RECTANGULAR
MODIFIED BRILLIANT**

Measurements **8.77 X 6.15 X 4.42 MM**

GRADING RESULTS

Carat Weight **2.26 CARATS**

Color Grade **FANCY VIVID BLUE**

Clarity Grade **VS 1**

ADDITIONAL GRADING INFORMATION

Polish **EXCELLENT**

Symmetry **EXCELLENT**

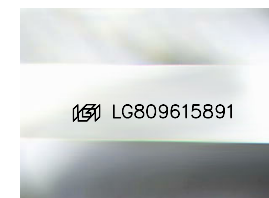
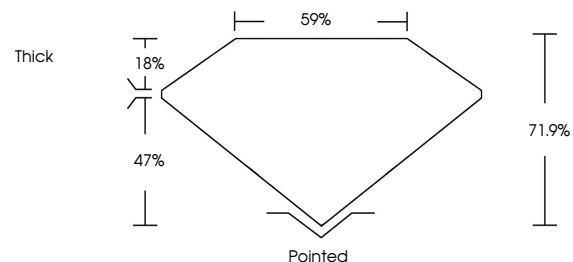
Fluorescence **NONE**

Inscription(s) **IGI LG809615891**

Comments: This Laboratory Grown Diamond was created by Chemical Vapor Deposition (CVD) growth process.

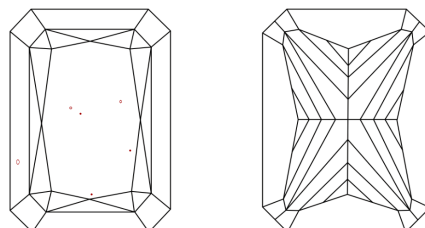
Indications of post-growth treatment.

PROPORTIONS



Sample Image Used

CLARITY CHARACTERISTICS



KEY TO SYMBOLS

Red symbols indicate internal characteristics.
Green symbols indicate external characteristics.

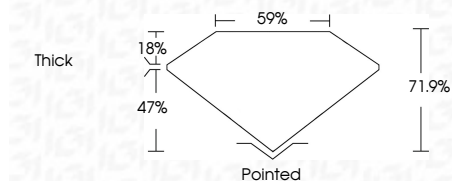
COLOR

D E F G H I J Faint Very Light Light

CLARITY

FL IF VS¹⁻² VS¹⁻² SI¹⁻² I¹⁻³

Flawless Internally Flawless Very Very Slightly Included Very Slightly Included Slightly Included Included



ADDITIONAL GRADING INFORMATION

Polish **EXCELLENT**

Symmetry **EXCELLENT**

Fluorescence **NONE**

Inscription(s) **IGI LG809615891**

Comments: This Laboratory Grown Diamond was created by Chemical Vapor Deposition (CVD) growth process.

Indications of post-growth treatment.



June 13, 2026
IGI Report No LG809615891
CUT CORNERED RECT. MODIFIED BRILLIANT
8.77 X 6.15 X 4.42 MM
2.26 CARATS
FANCY VIVID BLUE
VS 1
71.9%
59%
Thick
Pointed
EXCELLENT
EXCELLENT
NONE
IGI LG809615891

Comments: This Laboratory Grown Diamond was created by Chemical Vapor Deposition (CVD) growth process. Indications of post-growth treatment.