



ELECTRONIC COPY

LG809613064 Report verification at igi.org



June 18, 2026 IGI Report Number LG809613064 Description LABORATORY GROWN DIAMOND Shape and Cutting Style ROUND BRILLIANT Measurements 8.75 - 8.80 X 5.26 MM GRADING RESULTS Carat Weight 2.51 CARATS Color Grade D Clarity Grade VS 1 Cut Grade IDEAL

June 18, 2026 IGI Report Number LG809613064 Description LABORATORY GROWN DIAMOND Shape and Cutting Style ROUND BRILLIANT Measurements 8.75 - 8.80 X 5.26 MM

GRADING RESULTS

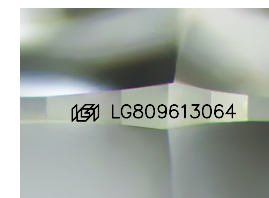
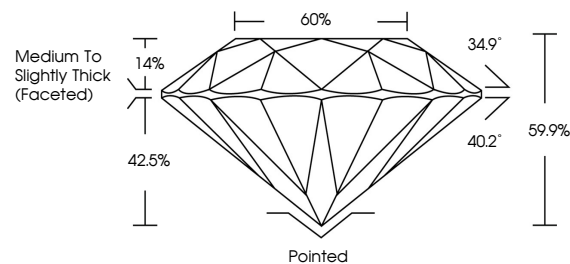
Carat Weight 2.51 CARATS Color Grade D Clarity Grade VS 1 Cut Grade IDEAL

ADDITIONAL GRADING INFORMATION

Polish EXCELLENT Symmetry EXCELLENT Fluorescence NONE Inscription(s) IGI LG809613064

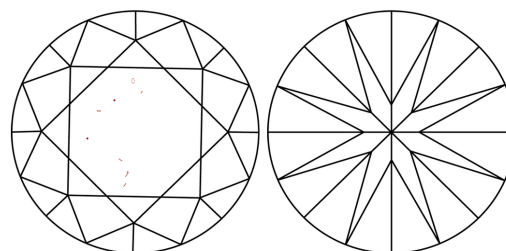
Comments: This Laboratory Grown Diamond was created by Chemical Vapor Deposition (CVD) growth process. Type IIa

PROPORTIONS



Sample Image Used

CLARITY CHARACTERISTICS



KEY TO SYMBOLS

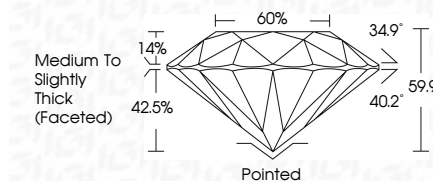
Red symbols indicate internal characteristics. Green symbols indicate external characteristics.

COLOR

D E F G H I J Faint Very Light Light

CLARITY

FL IF VS 1-2 VS 2-3 SI 1-2 I 1-3 Flawless Internally Flawless Very Very Slightly Included Very Slightly Included Slightly Included Included



ADDITIONAL GRADING INFORMATION

Polish EXCELLENT Symmetry EXCELLENT Fluorescence NONE Inscription(s) IGI LG809613064 Comments: This Laboratory Grown Diamond was created by Chemical Vapor Deposition (CVD) growth process. Type IIa



June 18, 2026 IGI Report No LG809613064 ROUND BRILLIANT 8.75 - 8.80 X 5.26 MM 2.51 CARATS D VS 1 IDEAL 59.9% 60% Medium To Slightly Thick (Faceted) Pointed EXCELLENT EXCELLENT NONE NONE IGI LG809613064 Comments: This Laboratory Grown Diamond was created by Chemical Vapor Deposition (CVD) growth process. Type IIa