



ELECTRONIC COPY

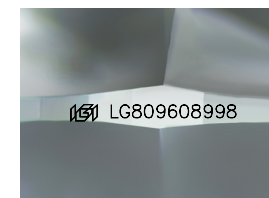
LG809608998
Report verification at igi.org



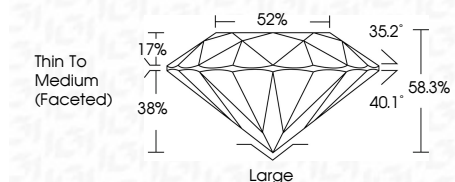
June 16, 2026
IGI Report Number **LG809608998**
Description **LABORATORY GROWN DIAMOND**
Shape and Cutting Style **OLD EUROPEAN CUT**
Measurements **10.91 - 10.96 X 6.37 MM**

GRADING RESULTS

Carat Weight **5.01 CARATS**
Color Grade **E**
Clarity Grade **VVS 2**



Sample Image Used



ADDITIONAL GRADING INFORMATION

Polish **EXCELLENT**
Symmetry **EXCELLENT**
Fluorescence **NONE**
Inscription(s) **(IGI) LG809608998**
Comments: This Laboratory Grown Diamond was created by Chemical Vapor Deposition (CVD) growth process. Type IIa



June 16, 2026
IGI Report No. LG809608998
OLD EUROPEAN CUT
10.91 - 10.96 X 6.37 MM
5.01 CARATS
E
VVS 2
58.3%
38%
Thin To Medium (Faceted)
Large
EXCELLENT
EXCELLENT
NONE
(IGI) LG809608998
Comments: This Laboratory Grown Diamond was created by Chemical Vapor Deposition (CVD) growth process. Type IIa

June 16, 2026
IGI Report Number **LG809608998**
Description **LABORATORY GROWN DIAMOND**
Shape and Cutting Style **OLD EUROPEAN CUT**
Measurements **10.91 - 10.96 X 6.37 MM**

GRADING RESULTS

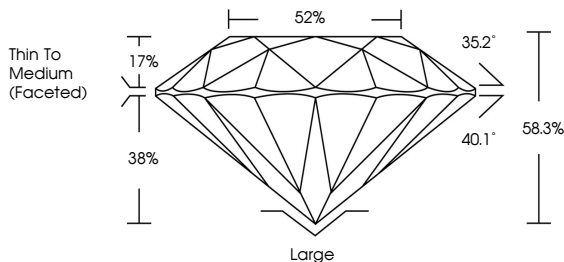
Carat Weight **5.01 CARATS**
Color Grade **E**
Clarity Grade **VVS 2**

ADDITIONAL GRADING INFORMATION

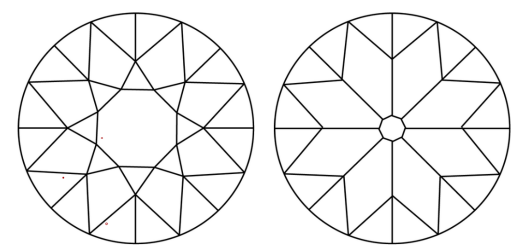
Polish **EXCELLENT**
Symmetry **EXCELLENT**
Fluorescence **NONE**
Inscription(s) **(IGI) LG809608998**

Comments: This Laboratory Grown Diamond was created by Chemical Vapor Deposition (CVD) growth process. Type IIa

PROPORTIONS



CLARITY CHARACTERISTICS



KEY TO SYMBOLS

Red symbols indicate internal characteristics.
Green symbols indicate external characteristics.

COLOR

D	E	F	G	H	I	J	Faint	Very Light	Light
---	---	---	---	---	---	---	-------	------------	-------

CLARITY

FL	IF	VVS ¹⁻²	VS ¹⁻²	SI ¹⁻²	I ¹⁻³
Flawless	Internally Flawless	Very Very Slightly Included	Very Slightly Included	Slightly Included	Included

