



ELECTRONIC COPY

LG809608996 Report verification at igi.org



June 16, 2026

IGI Report Number LG809608996

Description LABORATORY GROWN DIAMOND

Shape and Cutting Style CUT CORNERED RECTANGULAR MODIFIED BRILLIANT

Measurements 11.07 X 8.18 X 5.15 MM

GRADING RESULTS

Carat Weight 4.01 CARATS

Color Grade F

Clarity Grade VVS 2

LABORATORY GROWN DIAMOND REPORT

June 16, 2026

IGI Report Number LG809608996

Description LABORATORY GROWN DIAMOND

Shape and Cutting Style CUT CORNERED RECTANGULAR MODIFIED BRILLIANT

Measurements 11.07 X 8.18 X 5.15 MM

GRADING RESULTS

Carat Weight 4.01 CARATS

Color Grade F

Clarity Grade VVS 2

ADDITIONAL GRADING INFORMATION

Polish EXCELLENT

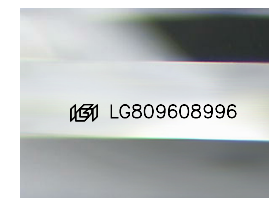
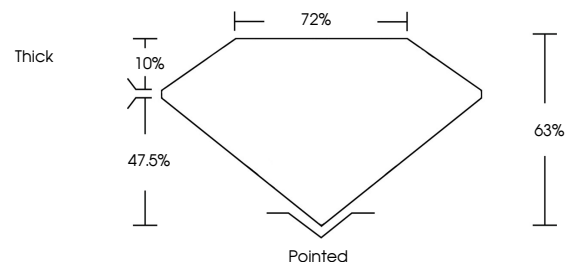
Symmetry EXCELLENT

Fluorescence NONE

Inscription(s) LG809608996

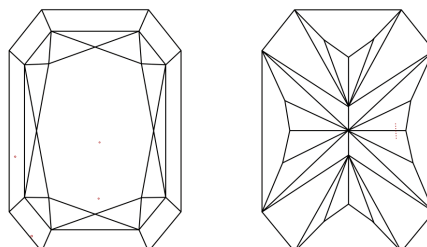
Comments: This Laboratory Grown Diamond was created by Chemical Vapor Deposition (CVD) growth process. Type IIa

PROPORTIONS



Sample Image Used

CLARITY CHARACTERISTICS



KEY TO SYMBOLS

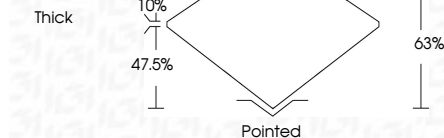
Red symbols indicate internal characteristics. Green symbols indicate external characteristics.

COLOR

D E F G H I J Faint Very Light Light

CLARITY

FL IF VVS 1-2 VS 1-2 SI 1-2 I 1-3 Flawless Internally Flawless Very Very Slightly Included Very Slightly Included Slightly Included Included



ADDITIONAL GRADING INFORMATION

Polish EXCELLENT

Symmetry EXCELLENT

Fluorescence NONE

Inscription(s) LG809608996

Comments: This Laboratory Grown Diamond was created by Chemical Vapor Deposition (CVD) growth process. Type IIa



IGI



June 16, 2026 IGI Report No. LG809608996 CUT CORNERED RECT. MODIFIED BRILLIANT 11.07 X 8.18 X 5.15 MM 4.01 CARATS F VVS 2 63% 72% Thick Polished EXCELLENT EXCELLENT NONE NONE LG809608996

Comments: This Laboratory Grown Diamond was created by Chemical Vapor Deposition (CVD) growth process. Type IIa