



ELECTRONIC COPY

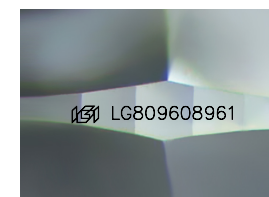
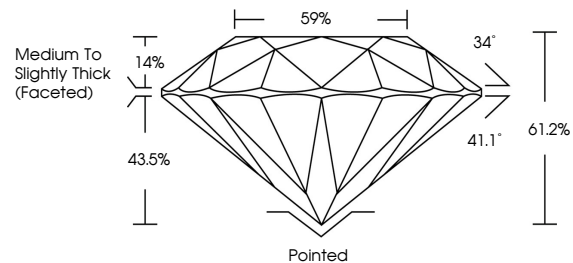
LG809608961 Report verification at igi.org



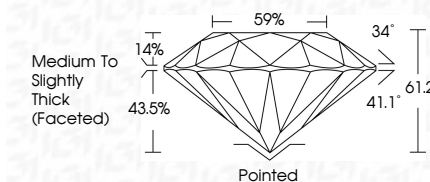
June 12, 2026 IGI Report Number LG809608961 Description LABORATORY GROWN DIAMOND Shape and Cutting Style ROUND BRILLIANT Measurements 6.72 - 6.76 X 4.13 MM GRADING RESULTS Carat Weight 1.15 CARAT Color Grade FANCY VIVID GREEN Clarity Grade SI 2 Cut Grade IDEAL

June 12, 2026 IGI Report Number LG809608961 Description LABORATORY GROWN DIAMOND Shape and Cutting Style ROUND BRILLIANT Measurements 6.72 - 6.76 X 4.13 MM GRADING RESULTS Carat Weight 1.15 CARAT Color Grade FANCY VIVID GREEN Clarity Grade SI 2 Cut Grade IDEAL

PROPORTIONS



Sample Image Used



ADDITIONAL GRADING INFORMATION

Polish EXCELLENT Symmetry EXCELLENT Fluorescence NONE Inscription(s) IGI LG809608961

Comments: This Laboratory Grown Diamond was created by Chemical Vapor Deposition (CVD) growth process. Indications of post-growth treatment.

COLOR

D E F G H I J Faint Very Light Light

CLARITY

FL IF VS 1-2 VS 1-2 SI 1-2 I 1-3 Flawless Internally Flawless Very Very Slightly Included Very Slightly Included Slightly Included Included

ADDITIONAL GRADING INFORMATION

Polish EXCELLENT Symmetry EXCELLENT Fluorescence NONE Inscription(s) IGI LG809608961 Comments: This Laboratory Grown Diamond was created by Chemical Vapor Deposition (CVD) growth process. Indications of post-growth treatment.



IGI



June 12, 2026 IGI Report No LG809608961 ROUND BRILLIANT 6.72 - 6.76 X 4.13 MM 1.15 CARAT FANCY VIVID GREEN SI 2 IDEAL 61.2% 59% Medium To Slightly Thick (Faceted) Pointed EXCELLENT EXCELLENT NONE NONE IGI LG809608961 Comments: This Laboratory Grown Diamond was created by Chemical Vapor Deposition (CVD) growth process. Indications of post-growth treatment.