



ELECTRONIC COPY

LG809605677
Report verification at igi.org

LABORATORY GROWN DIAMOND REPORT

June 12, 2026
IGI Report Number **LG809605677**
Description **LABORATORY GROWN DIAMOND**
Shape and Cutting Style **ANTIQUÉ CUSHION CUT**
Measurements **10.44 X 6.87 X 4.33 MM**

GRADING RESULTS

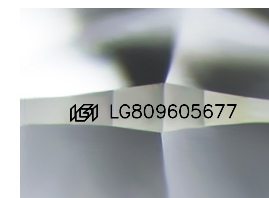
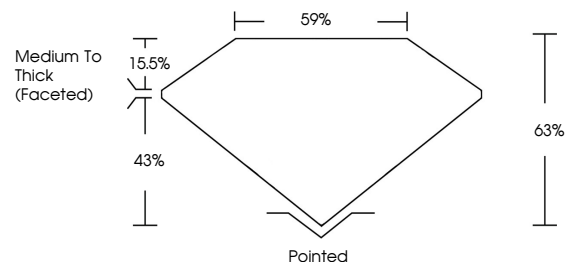
Carat Weight **2.51 CARATS**
Color Grade **D**
Clarity Grade **VVS 1**

ADDITIONAL GRADING INFORMATION

Polish **EXCELLENT**
Symmetry **EXCELLENT**
Fluorescence **NONE**
Inscription(s) **IGI LG809605677**

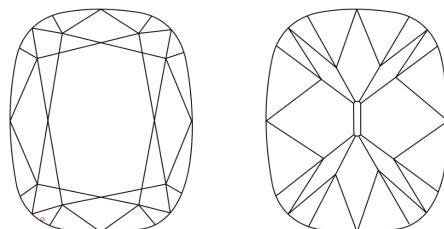
Comments: As Grown - No indication of post-growth treatment.
This Laboratory Grown Diamond was created by High Pressure High Temperature (HPHT) growth process.
Type II

PROPORTIONS



Sample Image Used

CLARITY CHARACTERISTICS



KEY TO SYMBOLS

Red symbols indicate internal characteristics.
Green symbols indicate external characteristics.

COLOR

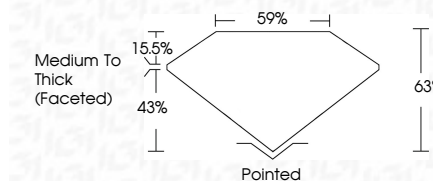
D E F G H I J Faint Very Light Light

CLARITY

FL	IF	VVS ¹⁻²	VS ¹⁻²	SI ¹⁻²	I ¹⁻³
Flawless	Internally Flawless	Very Very Slightly Included	Very Slightly Included	Slightly Included	Included



June 12, 2026
IGI Report Number **LG809605677**
Description **LABORATORY GROWN DIAMOND**
Shape and Cutting Style **ANTIQUÉ CUSHION CUT**
Measurements **10.44 X 6.87 X 4.33 MM**
GRADING RESULTS
Carat Weight **2.51 CARATS**
Color Grade **D**
Clarity Grade **VVS 1**



ADDITIONAL GRADING INFORMATION

Polish **EXCELLENT**
Symmetry **EXCELLENT**
Fluorescence **NONE**
Inscription(s) **IGI LG809605677**
Comments: As Grown - No indication of post-growth treatment.
This Laboratory Grown Diamond was created by High Pressure High Temperature (HPHT) growth process.
Type II



IGI

June 12, 2026
IGI Report No. LG809605677
ANTIQUÉ CUSHION CUT
10.44 X 6.87 X 4.33 MM
2.51 CARATS
D
VVS 1
63%
59%
Medium To Thick (Faceted)
Pointed
EXCELLENT
EXCELLENT
NONE
IGI LG809605677

Comments: As Grown - No indication of post-growth treatment.
This Laboratory Grown Diamond was created by High Pressure High Temperature (HPHT) growth process.
Type II