



ELECTRONIC COPY

LG809602738 Report verification at igi.org



June 12, 2026 IGI Report Number LG809602738 Description LABORATORY GROWN DIAMOND Shape and Cutting Style ROUND BRILLIANT Measurements 6.85 - 6.90 X 4.20 MM GRADING RESULTS Carat Weight 1.21 CARAT Color Grade D Clarity Grade INTERNALLY FLAWLESS Cut Grade IDEAL

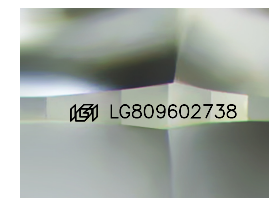
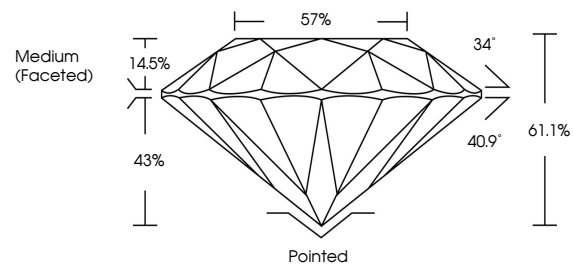
June 12, 2026 IGI Report Number LG809602738 Description LABORATORY GROWN DIAMOND Shape and Cutting Style ROUND BRILLIANT Measurements 6.85 - 6.90 X 4.20 MM

GRADING RESULTS Carat Weight 1.21 CARAT Color Grade D Clarity Grade INTERNALLY FLAWLESS Cut Grade IDEAL

ADDITIONAL GRADING INFORMATION Polish EXCELLENT Symmetry EXCELLENT Fluorescence NONE Inscription(s) IGI LG809602738

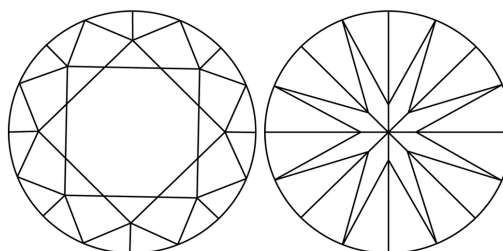
Comments: As Grown - No indication of post-growth treatment. This Laboratory Grown Diamond was created by High Pressure High Temperature (HPHT) growth process. Type II

PROPORTIONS



Sample Image Used

CLARITY CHARACTERISTICS



KEY TO SYMBOLS

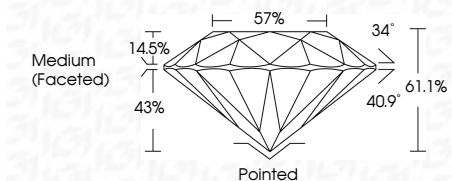
Red symbols indicate internal characteristics. Green symbols indicate external characteristics.

COLOR

D E F G H I J Faint Very Light Light

CLARITY

FL IF VS 1-2 VS 1-2 SI 1-2 I 1-3 Flawless Internally Flawless Very Very Slightly Included Very Slightly Included Slightly Included Included



ADDITIONAL GRADING INFORMATION

Polish EXCELLENT Symmetry EXCELLENT Fluorescence NONE Inscription(s) IGI LG809602738 Comments: As Grown - No indication of post-growth treatment. This Laboratory Grown Diamond was created by High Pressure High Temperature (HPHT) growth process. Type II



IGI



Summary table of report details: June 12, 2026, IGI Report No LG809602738, ROUND BRILLIANT, 6.85 - 6.90 X 4.20 MM, 1.21 CARAT, D, IDEAL, 61.1%, 57%, Medium (Faceted), EXCELLENT, EXCELLENT, NONE, IGI LG809602738

Comments: As Grown - No indication of post-growth treatment. This Laboratory Grown Diamond was created by High Pressure High Temperature (HPHT) growth process. Type II