



ELECTRONIC COPY

LG808639093
Report verification at igi.org



June 15, 2026
IGI Report Number **LG808639093**
Description **LABORATORY GROWN DIAMOND**
Shape and Cutting Style **CUSHION MODIFIED BRILLIANT**
Measurements **7.34 X 6.91 X 4.26 MM**
GRADING RESULTS
Carat Weight **2.00 CARATS**
Color Grade **FANCY VIVID YELLOW**
Clarity Grade **VS 1**

June 15, 2026
IGI Report Number **LG808639093**
Description **LABORATORY GROWN DIAMOND**
Shape and Cutting Style **CUSHION MODIFIED BRILLIANT**
Measurements **7.34 X 6.91 X 4.26 MM**

GRADING RESULTS

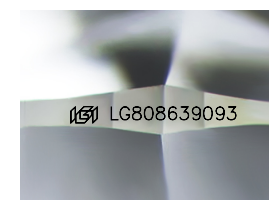
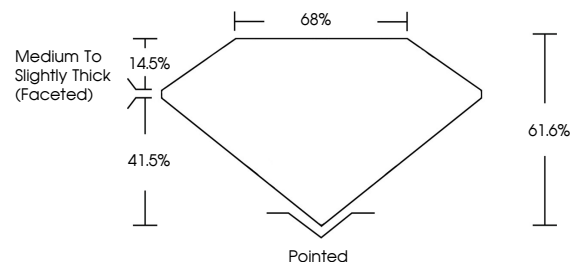
Carat Weight **2.00 CARATS**
Color Grade **FANCY VIVID YELLOW**
Clarity Grade **VS 1**

ADDITIONAL GRADING INFORMATION

Polish **EXCELLENT**
Symmetry **EXCELLENT**
Fluorescence **NONE**
Inscription(s) **LG808639093**

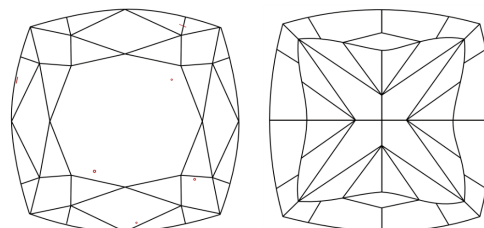
Comments: This Laboratory Grown Diamond was created by Chemical Vapor Deposition (CVD) growth process.

PROPORTIONS



Sample Image Used

CLARITY CHARACTERISTICS



KEY TO SYMBOLS

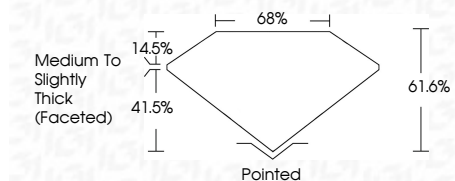
Red symbols indicate internal characteristics.
Green symbols indicate external characteristics.

COLOR

D E F G H I J Faint Very Light Light

CLARITY

| FL | IF | VS ¹⁻² | VS ¹⁻² | SI ¹⁻² | I ¹⁻³ |
|----------|---------------------|-----------------------------|------------------------|-------------------|------------------|
| Flawless | Internally Flawless | Very Very Slightly Included | Very Slightly Included | Slightly Included | Included |



ADDITIONAL GRADING INFORMATION

Polish **EXCELLENT**
Symmetry **EXCELLENT**
Fluorescence **NONE**
Inscription(s) **LG808639093**
Comments: This Laboratory Grown Diamond was created by Chemical Vapor Deposition (CVD) growth process.



June 15, 2026
IGI Report No **LG808639093**
CUSHION MODIFIED BRILLIANT
2.00 CARATS
Carat Weight **2.00 CARATS**
Color Grade **FANCY VIVID YELLOW**
Clarity Grade **VS 1**
Table **61.6%**
Depth **65%**
Girdle **Medium to Slightly Thick (Faceted)**
Culet **Pointed**
Polish **EXCELLENT**
Symmetry **EXCELLENT**
Fluorescence **NONE**
Inscription(s) **LG808639093**
Comments: This Laboratory Grown Diamond was created by Chemical Vapor Deposition (CVD) growth process.