



**ELECTRONIC COPY**

LG808639054  
Report verification at igi.org



June 11, 2026  
IGI Report Number **LG808639054**  
Description **LABORATORY GROWN DIAMOND**  
Shape and Cutting Style **CUT CORNERED  
RECTANGULAR MODIFIED  
BRILLIANT**

Measurements **10.83 X 7.70 X 4.98 MM**

**GRADING RESULTS**

Carat Weight **3.89 CARATS**  
Color Grade **E**  
Clarity Grade **VS 1**

June 11, 2026  
IGI Report Number **LG808639054**  
Description **LABORATORY GROWN DIAMOND**  
Shape and Cutting Style **CUT CORNERED RECTANGULAR  
MODIFIED BRILLIANT**  
Measurements **10.83 X 7.70 X 4.98 MM**

**GRADING RESULTS**

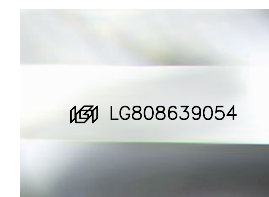
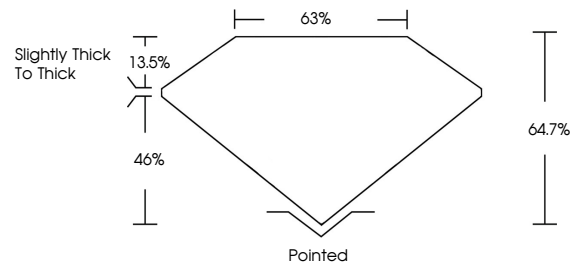
Carat Weight **3.89 CARATS**  
Color Grade **E**  
Clarity Grade **VS 1**

**ADDITIONAL GRADING INFORMATION**

Polish **EXCELLENT**  
Symmetry **EXCELLENT**  
Fluorescence **NONE**  
Inscription(s) **IGI LG808639054**

Comments: This Laboratory Grown Diamond was created by Chemical Vapor Deposition (CVD) growth process. Type IIa

**PROPORTIONS**



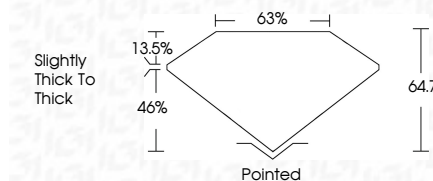
Sample Image Used

**COLOR**

D E F G H I J Faint Very Light Light

**CLARITY**

FL	IF	VS <sup>1-2</sup>	VS <sup>1-2</sup>	SI <sup>1-2</sup>	I <sup>1-3</sup>
Flawless	Internally Flawless	Very Very Slightly Included	Very Slightly Included	Slightly Included	Included



**ADDITIONAL GRADING INFORMATION**

Polish **EXCELLENT**  
Symmetry **EXCELLENT**  
Fluorescence **NONE**  
Inscription(s) **IGI LG808639054**  
Comments: This Laboratory Grown Diamond was created by Chemical Vapor Deposition (CVD) growth process. Type IIa



**IGI**



June 11, 2026  
IGI Report No. **LG808639054**  
**CUT CORNERED RECT. MODIFIED BRILLIANT**  
**10.83 X 7.70 X 4.98 MM**  
Carat Weight **3.89 CARATS**  
Color Grade **E**  
Clarity Grade **VS 1**  
Table **63%**  
Depth **13.5%**  
Girdle **Slightly thick to thick**  
Culet **Pointed**  
Polish **EXCELLENT**  
Symmetry **EXCELLENT**  
Fluorescence **NONE**  
Inscription(s) **IGI LG808639054**  
Comments: This Laboratory Grown Diamond was created by Chemical Vapor Deposition (CVD) growth process. Type IIa