



ELECTRONIC COPY

LG808637750 Report verification at igi.org



June 16, 2026 IGI Report Number LG808637750 Description LABORATORY GROWN DIAMOND Shape and Cutting Style HEXAGONAL MODIFIED BRILLIANT Measurements 15.10 X 7.25 X 4.94 MM GRADING RESULTS Carat Weight 3.59 CARATS Color Grade E Clarity Grade VS 1

June 16, 2026 IGI Report Number LG808637750 Description LABORATORY GROWN DIAMOND Shape and Cutting Style HEXAGONAL MODIFIED BRILLIANT Measurements 15.10 X 7.25 X 4.94 MM

GRADING RESULTS

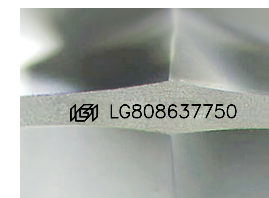
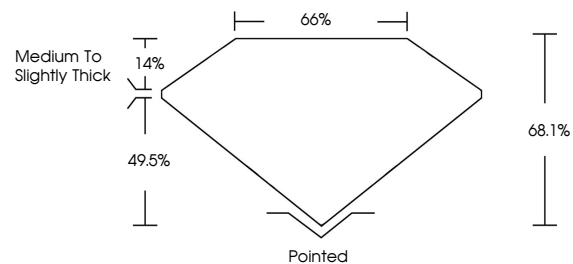
Carat Weight 3.59 CARATS Color Grade E Clarity Grade VS 1

ADDITIONAL GRADING INFORMATION

Polish EXCELLENT Symmetry EXCELLENT Fluorescence NONE Inscription(s) LG808637750

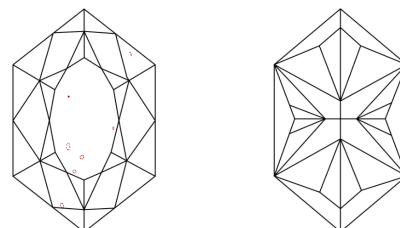
Comments: This Laboratory Grown Diamond was created by Chemical Vapor Deposition (CVD) growth process. Type IIa

PROPORTIONS



Sample Image Used

CLARITY CHARACTERISTICS



KEY TO SYMBOLS

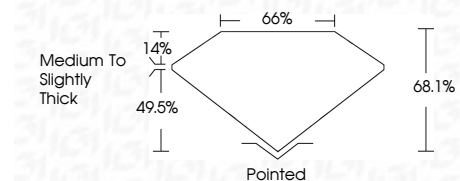
Red symbols indicate internal characteristics. Green symbols indicate external characteristics.

COLOR

D E F G H I J Faint Very Light Light

CLARITY

Table with columns: FL, IF, VS 1-2, VS 1-2, SI 1-2, I 1-3. Row: Flawless, Internally Flawless, Very Very Slightly Included, Very Slightly Included, Slightly Included, Included



ADDITIONAL GRADING INFORMATION

Polish EXCELLENT Symmetry EXCELLENT Fluorescence NONE Inscription(s) LG808637750 Comments: This Laboratory Grown Diamond was created by Chemical Vapor Deposition (CVD) growth process. Type IIa



June 16, 2026 IGI Report No. LG808637750 HEXAGONAL MODIFIED BRILLIANT 3.59 CARATS E VS 1 68.1% 66% Medium to Slightly Thick Pointed EXCELLENT EXCELLENT NONE NONE LG808637750 Comments: This Laboratory Grown Diamond was created by Chemical Vapor Deposition (CVD) growth process. Type IIa