



**ELECTRONIC COPY**

LG808635359  
Report verification at igi.org



June 12, 2026  
IGI Report Number **LG808635359**  
Description **LABORATORY GROWN DIAMOND**  
Shape and Cutting Style **CUT CORNERED  
RECTANGULAR MODIFIED  
BRILLIANT**  
Measurements **8.69 X 6.14 X 4.19 MM**  
**GRADING RESULTS**  
Carat Weight **2.03 CARATS**  
Color Grade **FANCY VIVID PINK**  
Clarity Grade **VVS 2**

**LABORATORY GROWN DIAMOND REPORT**

June 12, 2026  
IGI Report Number **LG808635359**  
Description **LABORATORY GROWN DIAMOND**  
Shape and Cutting Style **CUT CORNERED RECTANGULAR  
MODIFIED BRILLIANT**  
Measurements **8.69 X 6.14 X 4.19 MM**

**GRADING RESULTS**

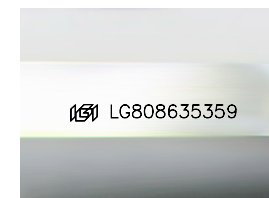
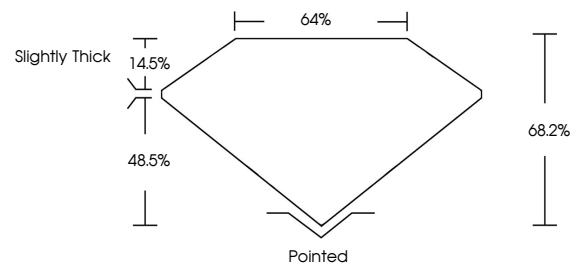
Carat Weight **2.03 CARATS**  
Color Grade **FANCY VIVID PINK**  
Clarity Grade **VVS 2**

**ADDITIONAL GRADING INFORMATION**

Polish **EXCELLENT**  
Symmetry **EXCELLENT**  
Fluorescence **STRONG**  
Inscription(s) **LG808635359**

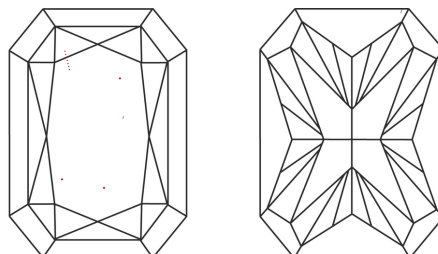
Comments: This Laboratory Grown Diamond was created by Chemical Vapor Deposition (CVD) growth process.  
Indications of post-growth treatment.

**PROPORTIONS**



Sample Image Used

**CLARITY CHARACTERISTICS**



**KEY TO SYMBOLS**

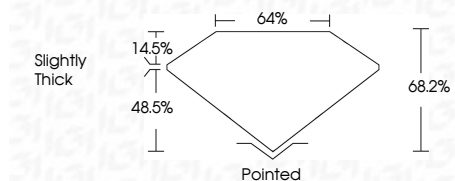
Red symbols indicate internal characteristics.  
Green symbols indicate external characteristics.

**COLOR**

D E F G H I J Faint Very Light Light

**CLARITY**

FL	IF	VVS <sup>1-2</sup>	VS <sup>1-2</sup>	SI <sup>1-2</sup>	I <sup>1-3</sup>
Flawless	Internally Flawless	Very Very Slightly Included	Very Slightly Included	Slightly Included	Included



**ADDITIONAL GRADING INFORMATION**

Polish **EXCELLENT**  
Symmetry **EXCELLENT**  
Fluorescence **STRONG**  
Inscription(s) **LG808635359**  
Comments: This Laboratory Grown Diamond was created by Chemical Vapor Deposition (CVD) growth process.  
Indications of post-growth treatment.



**IGI**



June 12, 2026  
IGI Report No. **LG808635359**  
**CUT CORNERED RECT. MODIFIED BRILLIANT**  
**8.69 X 6.14 X 4.19 MM**  
Carat Weight **2.03 CARATS**  
Color Grade **FANCY VIVID PINK**  
Clarity Grade **VVS 2**  
Depth **48.5%**  
Table **14.5%**  
Girdle **Slightly Thick**  
Culet **Pointed**  
Polish **EXCELLENT**  
Symmetry **EXCELLENT**  
Fluorescence **STRONG**  
Inscription(s) **LG808635359**

Comments: This Laboratory Grown Diamond was created by Chemical Vapor Deposition (CVD) growth process.  
Indications of post-growth treatment.