



ELECTRONIC COPY

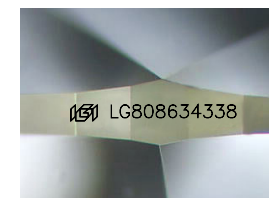
LG808634338
Report verification at igi.org



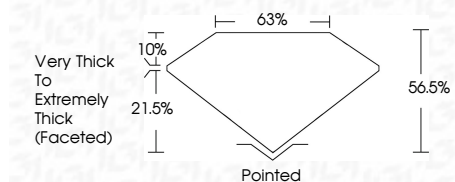
June 10, 2026
IGI Report Number **LG808634338**
Description **LABORATORY GROWN DIAMOND**
Shape and Cutting Style **HEART MODIFIED BRILLIANT**
Measurements **12.39 X 13.64 X 7.70 MM**

GRADING RESULTS

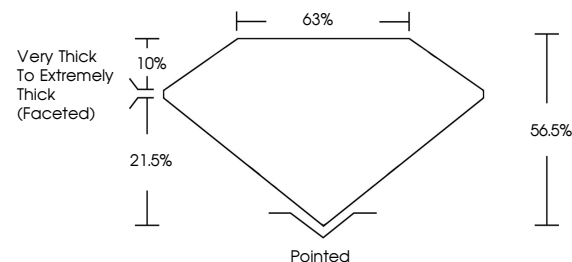
Carat Weight **10.10 CARATS**
Color Grade **FANCY INTENSE YELLOW**
Clarity Grade **VS 1**



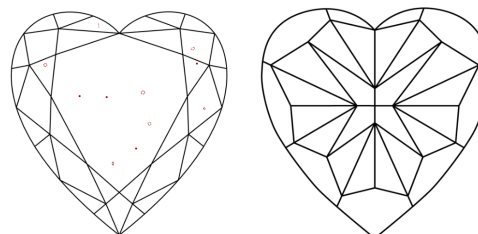
Sample Image Used



PROPORTIONS



CLARITY CHARACTERISTICS



KEY TO SYMBOLS

Red symbols indicate internal characteristics.
Green symbols indicate external characteristics.

COLOR

D E F G H I J Faint Very Light Light

CLARITY

FL	IF	VS ¹⁻²	VS ¹⁻²	SI ¹⁻²	I ¹⁻³
Flawless	Internally Flawless	Very Very Slightly Included	Very Slightly Included	Slightly Included	Included

ADDITIONAL GRADING INFORMATION

Polish **EXCELLENT**
Symmetry **EXCELLENT**
Fluorescence **NONE**
Inscription(s) **IGI LG808634338**
Comments: This Laboratory Grown Diamond was created by Chemical Vapor Deposition (CVD) growth process.



IGI



June 10, 2026
IGI Report No **LG808634338**
HEART MODIFIED BRILLIANT
12.39 X 13.64 X 7.70 MM
10.10 CARATS
Color Grade **FANCY INTENSE YELLOW**
Clarity Grade **VS 1**
Depth **56.5%**
Table **21.5%**
Girdle **Very Thick to Extremely Thick (Faceted)**
Culet **Pointed**
Polish **EXCELLENT**
Symmetry **EXCELLENT**
Fluorescence **NONE**
Inscription(s) **IGI LG808634338**
Comments: This Laboratory Grown Diamond was created by Chemical Vapor Deposition (CVD) growth process.