



ELECTRONIC COPY

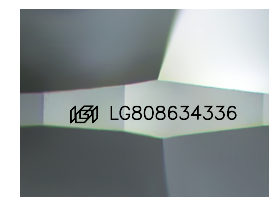
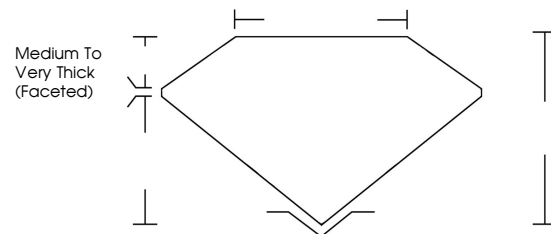
LG808634336
Report verification at igi.org



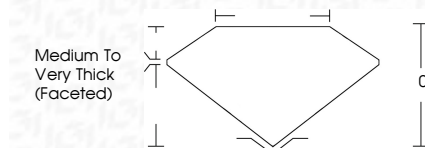
June 15, 2026
IGI Report Number **LG808634336**
Description **LABORATORY GROWN DIAMOND**
Shape and Cutting Style **PEAR ROSE CUT**
Measurements **22.41 X 17.88 X 4.20 MM**
GRADING RESULTS
Carat Weight **15.69 CARATS**
Color Grade **F**
Clarity Grade **VS 1**

June 15, 2026
IGI Report Number **LG808634336**
Description **LABORATORY GROWN DIAMOND**
Shape and Cutting Style **PEAR ROSE CUT**
Measurements **22.41 X 17.88 X 4.20 MM**
GRADING RESULTS
Carat Weight **15.69 CARATS**
Color Grade **F**
Clarity Grade **VS 1**

PROPORTIONS



Sample Image Used



ADDITIONAL GRADING INFORMATION
Polish **VERY GOOD**
Symmetry **GOOD**
Fluorescence **NONE**
Inscription(s) **IGI LG808634336**
Comments: This Laboratory Grown Diamond was created by Chemical Vapor Deposition (CVD) growth process.
Type IIa

COLOR

D E F G H I J Faint Very Light Light

CLARITY

FL	IF	VS ¹⁻²	VS ¹⁻²	SI ¹⁻²	I ¹⁻³
Flawless	Internally Flawless	Very Very Slightly Included	Very Slightly Included	Slightly Included	Included

ADDITIONAL GRADING INFORMATION

Polish **VERY GOOD**
Symmetry **GOOD**
Fluorescence **NONE**
Inscription(s) **IGI LG808634336**
Comments: This Laboratory Grown Diamond was created by Chemical Vapor Deposition (CVD) growth process.
Type IIa



IGI



June 15, 2026
IGI Report No. **LG808634336**
PEAR ROSE CUT
22.41 X 17.88 X 4.20 MM
15.69 CARATS
F
Color Grade
VS 1
Clarity Grade
Medium to Very Thick (Faceted)
VERY GOOD
GOOD
NONE
NONE
Polish
Symmetry
Fluorescence
Inscription(s)
IGI LG808634336
Comments: This Laboratory Grown Diamond was created by Chemical Vapor Deposition (CVD) growth process.
Type IIa