



June 10, 2026

**IGI Report Number** LG808631986  
**ROUND BRILLIANT**  
**LABORATORY GROWN DIAMOND**  
**6.05 - 6.08 X 3.78 MM**

**0.86 CARAT**  
**F**  
**I.F.**  
**EXCELLENT**  
**EXCELLENT**  
**NONE**  
**IGI LG808631986**

Comments: As Grown - No indication of post-growth treatment. This Laboratory Grown Diamond was created by High Pressure High Temperature (HPHT) growth process. Type II

**LABORATORY GROWN DIAMOND REPORT**

June 10, 2026  
IGI Report Number **LG808631986**  
Description **LABORATORY GROWN DIAMOND**  
Shape and Cutting Style **ROUND BRILLIANT**  
Measurements **6.05 - 6.08 X 3.78 MM**

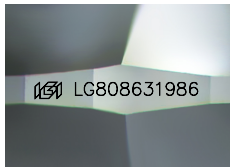
**GRADING RESULTS**

Carat Weight **0.86 CARAT**  
Color Grade **F**  
Clarity Grade **INTERNALLY FLAWLESS**  
Cut Grade **IDEAL**

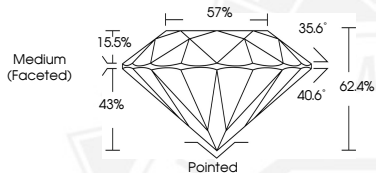
**ADDITIONAL GRADING INFORMATION**

Polish **EXCELLENT**  
Symmetry **EXCELLENT**  
Fluorescence **NONE**  
Inscription(s) **IGI LG808631986**

Comments: As Grown - No indication of post-growth treatment. This Laboratory Grown Diamond was created by High Pressure High Temperature (HPHT) growth process. Type II



Sample Image Used



June 10, 2026

**IGI Report Number** LG808631986  
**ROUND BRILLIANT**  
**LABORATORY GROWN DIAMOND**  
**6.05 - 6.08 X 3.78 MM**

**0.86 CARAT**  
**F**  
**I.F.**  
**EXCELLENT**  
**EXCELLENT**  
**NONE**  
**IGI LG808631986**

Comments: As Grown - No indication of post-growth treatment. This Laboratory Grown Diamond was created by High Pressure High Temperature (HPHT) growth process. Type II

THIS DOCUMENT WAS PRODUCED WITH THE FOLLOWING SECURITY MEASURES: SPECIAL DOCUMENT PAPER, INK SCREENS, WATERMARK, BACKGROUND DESIGNS, HOLOGRAM AND OTHER SECURITY FEATURES NOT LISTED AND DO EXCEED DOCUMENT SECURITY INDUSTRY GUIDELINES.

For terms & conditions and to verify this report, please visit [www.igi.org](http://www.igi.org)