



**ELECTRONIC COPY**

LG808630031  
Report verification at igi.org



June 11, 2026  
IGI Report Number **LG808630031**  
Description **LABORATORY GROWN DIAMOND**  
Shape and Cutting Style **OVAL BRILLIANT**  
Measurements **14.57 X 9.97 X 6.37 MM**  
**GRADING RESULTS**  
Carat Weight **6.05 CARATS**  
Color Grade **FANCY VIVID PINK**  
Clarity Grade **VVS 2**

June 11, 2026  
IGI Report Number **LG808630031**  
Description **LABORATORY GROWN DIAMOND**  
Shape and Cutting Style **OVAL BRILLIANT**  
Measurements **14.57 X 9.97 X 6.37 MM**

**GRADING RESULTS**

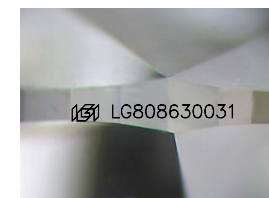
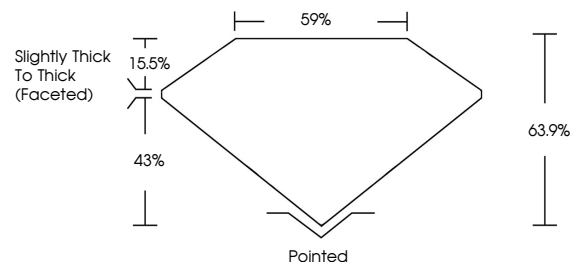
Carat Weight **6.05 CARATS**  
Color Grade **FANCY VIVID PINK**  
Clarity Grade **VVS 2**

**ADDITIONAL GRADING INFORMATION**

Polish **VERY GOOD**  
Symmetry **EXCELLENT**  
Fluorescence **STRONG**  
Inscription(s) **LG808630031**

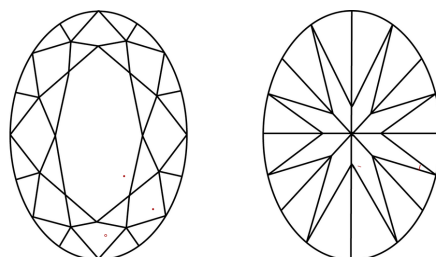
Comments: This Laboratory Grown Diamond was created by Chemical Vapor Deposition (CVD) growth process.  
Indications of post-growth treatment.

**PROPORTIONS**



Sample Image Used

**CLARITY CHARACTERISTICS**



**KEY TO SYMBOLS**

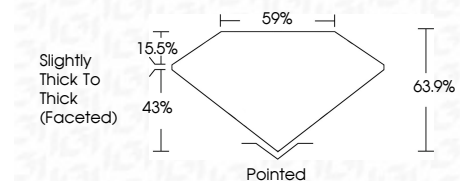
Red symbols indicate internal characteristics.  
Green symbols indicate external characteristics.

**COLOR**

D E F G H I J Faint Very Light Light

**CLARITY**

FL	IF	VVS <sup>1-2</sup>	VS <sup>1-2</sup>	SI <sup>1-2</sup>	I <sup>1-3</sup>
Flawless	Internally Flawless	Very Very Slightly Included	Very Slightly Included	Slightly Included	Included



**ADDITIONAL GRADING INFORMATION**

Polish **VERY GOOD**  
Symmetry **EXCELLENT**  
Fluorescence **STRONG**  
Inscription(s) **LG808630031**  
Comments: This Laboratory Grown Diamond was created by Chemical Vapor Deposition (CVD) growth process.  
Indications of post-growth treatment.



June 11, 2026  
IGI Report No. **LG808630031**  
**OVAL BRILLIANT**  
Carat Weight **6.05 CARATS**  
Color Grade **FANCY VIVID PINK**  
Clarity Grade **VVS 2**  
Table **59%**  
Girdle **Slightly Thick To Thick (Faceted)**  
Culet **Pointed**  
Polish **VERY GOOD**  
Symmetry **EXCELLENT**  
Fluorescence **STRONG**  
Inscription(s) **LG808630031**  
Comments: This Laboratory Grown Diamond was created by Chemical Vapor Deposition (CVD) growth process.  
Indications of post-growth treatment.