



ELECTRONIC COPY

LG808628036 Report verification at igi.org



June 10, 2026 IGI Report Number LG808628036 Description LABORATORY GROWN DIAMOND

Shape and Cutting Style CUT CORNERED RECTANGULAR MODIFIED BRILLIANT

Measurements 9.31 X 6.14 X 4.12 MM

GRADING RESULTS

Carat Weight 2.07 CARATS Color Grade D Clarity Grade VVS 2 Cut Grade EXCELLENT

LABORATORY GROWN DIAMOND REPORT

June 10, 2026 IGI Report Number LG808628036 Description LABORATORY GROWN DIAMOND Shape and Cutting Style CUT CORNERED RECTANGULAR MODIFIED BRILLIANT Measurements 9.31 X 6.14 X 4.12 MM

GRADING RESULTS

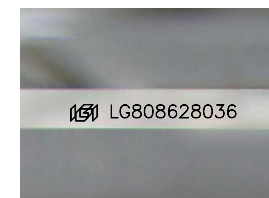
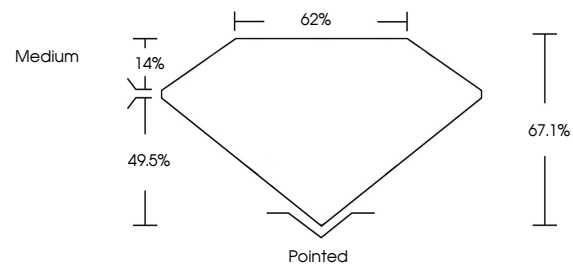
Carat Weight 2.07 CARATS Color Grade D Clarity Grade VVS 2 Cut Grade EXCELLENT

ADDITIONAL GRADING INFORMATION

Polish EXCELLENT Symmetry EXCELLENT Fluorescence NONE Inscription(s) IGI LG808628036

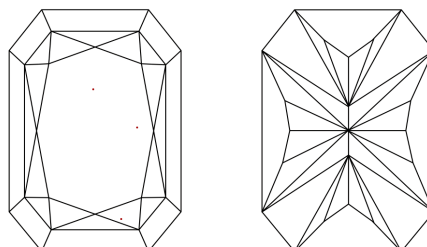
Comments: This Laboratory Grown Diamond was created by Chemical Vapor Deposition (CVD) growth process. Type IIa

PROPORTIONS



Sample Image Used

CLARITY CHARACTERISTICS



KEY TO SYMBOLS

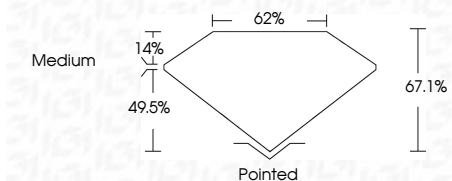
Red symbols indicate internal characteristics. Green symbols indicate external characteristics.

COLOR

D E F G H I J Faint Very Light Light

CLARITY

FL IF VVS 1-2 VS 1-2 SI 1-2 I 1-3 Flawless Internally Flawless Very Very Slightly Included Very Slightly Included Slightly Included Included



ADDITIONAL GRADING INFORMATION

Polish EXCELLENT Symmetry EXCELLENT Fluorescence NONE Inscription(s) IGI LG808628036 Comments: This Laboratory Grown Diamond was created by Chemical Vapor Deposition (CVD) growth process. Type IIa



IGI



June 10, 2026 IGI Report No. LG808628036 CUT CORNERED RECT. MODIFIED BRILLIANT 9.31 X 6.14 X 4.12 MM 2.07 CARATS D VVS 2 EXCELLENT 67.1% 62% Medium Pointed EXCELLENT EXCELLENT NONE NONE IGI LG808628036 Comments: This Laboratory Grown Diamond was created by Chemical Vapor Deposition (CVD) growth process. Type IIa