



**ELECTRONIC COPY**

LG808626305  
Report verification at igi.org



June 12, 2026  
IGI Report Number **LG808626305**  
Description **LABORATORY GROWN DIAMOND**  
Shape and Cutting Style **EMERALD CUT**  
Measurements **9.50 X 6.30 X 4.18 MM**  
**GRADING RESULTS**  
Carat Weight **2.50 CARATS**  
Color Grade **FANCY INTENSE PINK**  
Clarity Grade **VS 1**

June 12, 2026  
IGI Report Number **LG808626305**  
Description **LABORATORY GROWN DIAMOND**  
Shape and Cutting Style **EMERALD CUT**  
Measurements **9.50 X 6.30 X 4.18 MM**

**GRADING RESULTS**

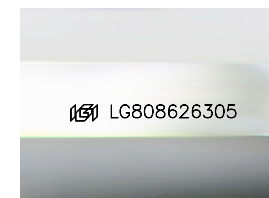
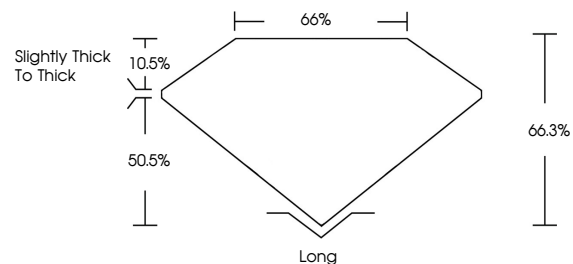
Carat Weight **2.50 CARATS**  
Color Grade **FANCY INTENSE PINK**  
Clarity Grade **VS 1**

**ADDITIONAL GRADING INFORMATION**

Polish **VERY GOOD**  
Symmetry **VERY GOOD**  
Fluorescence **STRONG**  
Inscription(s) **LG808626305**

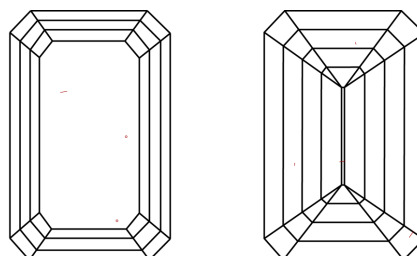
Comments: This Laboratory Grown Diamond was created by Chemical Vapor Deposition (CVD) growth process.  
Indications of post-growth treatment.

**PROPORTIONS**



Sample Image Used

**CLARITY CHARACTERISTICS**



**KEY TO SYMBOLS**

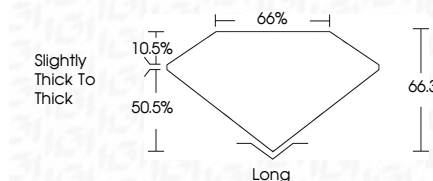
Red symbols indicate internal characteristics.  
Green symbols indicate external characteristics.

**COLOR**

D E F G H I J Faint Very Light Light

**CLARITY**

FL	IF	VS <sup>1-2</sup>	VS <sup>1-2</sup>	SI <sup>1-2</sup>	I <sup>1-3</sup>
Flawless	Internally Flawless	Very Very Slightly Included	Very Slightly Included	Slightly Included	Included



**ADDITIONAL GRADING INFORMATION**

Polish **VERY GOOD**  
Symmetry **VERY GOOD**  
Fluorescence **STRONG**  
Inscription(s) **LG808626305**  
Comments: This Laboratory Grown Diamond was created by Chemical Vapor Deposition (CVD) growth process.  
Indications of post-growth treatment.



**IGI**



June 12, 2026  
IGI Report No. **LG808626305**  
**EMERALD CUT**  
9.50 X 6.30 X 4.18 MM  
2.50 CARATS  
FANCY INTENSE PINK  
VS 1  
66.3%  
50.5%  
Slightly thick to thick  
Long  
Culet  
Polish **VERY GOOD**  
Symmetry **VERY GOOD**  
Fluorescence **STRONG**  
Inscription(s) **LG808626305**  
Comments: This Laboratory Grown Diamond was created by Chemical Vapor Deposition (CVD) growth process.  
Indications of post-growth treatment.