



ELECTRONIC COPY

LG808623646 Report verification at igi.org



June 11, 2026 IGI Report Number LG808623646 Description LABORATORY GROWN DIAMOND Shape and Cutting Style ROUND BRILLIANT Measurements 6.60 - 6.63 X 4.09 MM GRADING RESULTS Carat Weight 1.07 CARAT Color Grade D Clarity Grade VVS 2 Cut Grade IDEAL

June 11, 2026 IGI Report Number LG808623646 Description LABORATORY GROWN DIAMOND Shape and Cutting Style ROUND BRILLIANT Measurements 6.60 - 6.63 X 4.09 MM

GRADING RESULTS

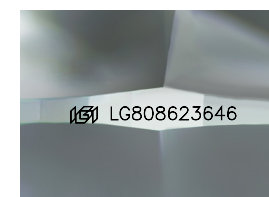
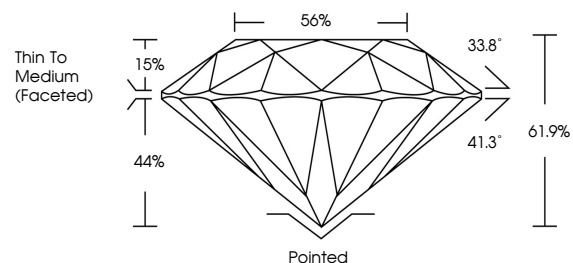
Carat Weight 1.07 CARAT Color Grade D Clarity Grade VVS 2 Cut Grade IDEAL

ADDITIONAL GRADING INFORMATION

Polish EXCELLENT Symmetry EXCELLENT Fluorescence NONE Inscription(s) IGI LG808623646

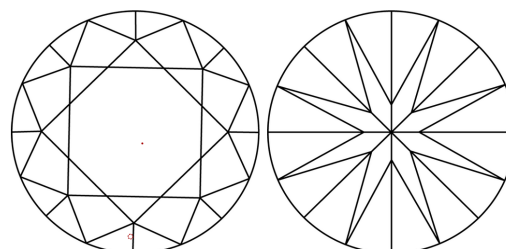
Comments: This Laboratory Grown Diamond was created by Chemical Vapor Deposition (CVD) growth process. Type IIa

PROPORTIONS



Sample Image Used

CLARITY CHARACTERISTICS



KEY TO SYMBOLS

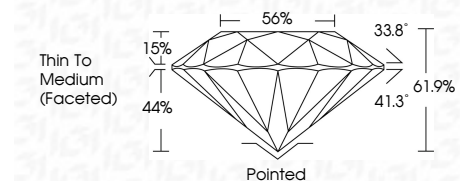
Red symbols indicate internal characteristics. Green symbols indicate external characteristics.

COLOR

D E F G H I J Faint Very Light Light

CLARITY

FL IF VVS 1-2 VS 1-2 SI 1-2 I 1-3 Flawless Internally Flawless Very Very Slightly Included Very Slightly Included Slightly Included Included



ADDITIONAL GRADING INFORMATION

Polish EXCELLENT Symmetry EXCELLENT Fluorescence NONE Inscription(s) IGI LG808623646 Comments: This Laboratory Grown Diamond was created by Chemical Vapor Deposition (CVD) growth process. Type IIa



Table with 2 columns: Property and Value. Properties include Date, Report No, Shape, Measurements, Carat Weight, Color Grade, Clarity Grade, Depth, Table, Girdle, Thin To Medium (Faceted), Cut, Polish, Symmetry, Fluorescence, and Inscription(s). Values include 6.60 - 6.63 X 4.09 MM, 1.07 CARAT, D, VVS 2, IDEAL, 61.9%, 56%, Pointed, EXCELLENT, EXCELLENT, NONE, and IGI LG808623646.

Comments: This Laboratory Grown Diamond was created by Chemical Vapor Deposition (CVD) growth process. Type IIa