



ELECTRONIC COPY

LG808623380
Report verification at igi.org



June 9, 2026
IGI Report Number **LG808623380**
Description **LABORATORY GROWN DIAMOND**
Shape and Cutting Style **ROUND BRILLIANT**
Measurements **12.22 - 12.27 X 7.54 MM**
GRADING RESULTS
Carat Weight **7.01 CARATS**
Color Grade **E**
Clarity Grade **VS 1**
Cut Grade **IDEAL**

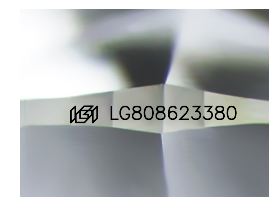
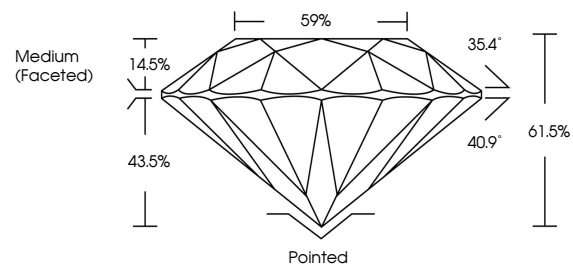
June 9, 2026
IGI Report Number **LG808623380**
Description **LABORATORY GROWN DIAMOND**
Shape and Cutting Style **ROUND BRILLIANT**
Measurements **12.22 - 12.27 X 7.54 MM**
GRADING RESULTS
Carat Weight **7.01 CARATS**
Color Grade **E**
Clarity Grade **VS 1**
Cut Grade **IDEAL**

ADDITIONAL GRADING INFORMATION

Polish **EXCELLENT**
Symmetry **EXCELLENT**
Fluorescence **NONE**
Inscription(s) **LG808623380**

Comments: This Laboratory Grown Diamond was created by Chemical Vapor Deposition (CVD) growth process. Type IIa

PROPORTIONS



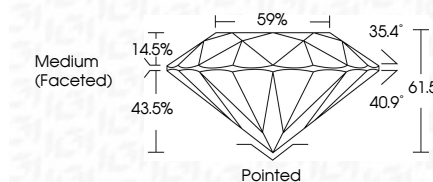
Sample Image Used

COLOR

D E F G H I J Faint Very Light Light

CLARITY

FL	IF	VS ¹⁻²	VS ¹⁻²	SI ¹⁻²	I ¹⁻³
Flawless	Internally Flawless	Very Very Slightly Included	Very Slightly Included	Slightly Included	Included



ADDITIONAL GRADING INFORMATION

Polish **EXCELLENT**
Symmetry **EXCELLENT**
Fluorescence **NONE**
Inscription(s) **LG808623380**
Comments: This Laboratory Grown Diamond was created by Chemical Vapor Deposition (CVD) growth process. Type IIa



IGI



June 9, 2026
IGI Report No LG808623380
ROUND BRILLIANT
12.22 - 12.27 X 7.54 MM
Carat Weight **7.01 CARATS**
Color Grade **E**
Clarity Grade **VS 1**
Depth **IDEAL**
Table **14.5%**
Girdle **43.5%**
Medium (Faceted)
Culet **Pointed**
Polish **EXCELLENT**
Symmetry **EXCELLENT**
Fluorescence **NONE**
Inscriptions(s) LG808623380
Comments: This Laboratory Grown Diamond was created by Chemical Vapor Deposition (CVD) growth process. Type IIa