



ELECTRONIC COPY

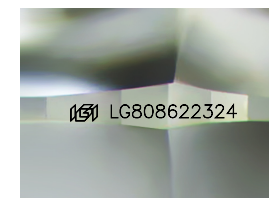
LG808622324
Report verification at igi.org



June 9, 2026
IGI Report Number **LG808622324**
Description **LABORATORY GROWN DIAMOND**
Shape and Cutting Style **ROUND MODIFIED BRILLIANT**
Measurements **8.57 - 8.57 X 4.71 MM**

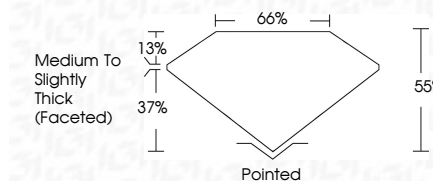
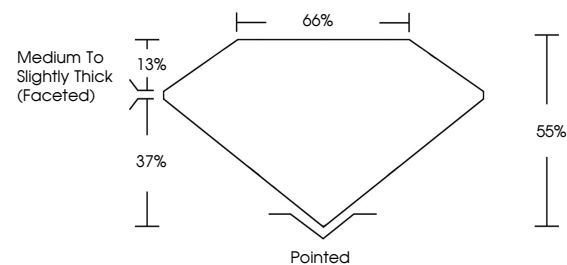
GRADING RESULTS

Carat Weight **2.55 CARATS**
Color Grade **E**
Clarity Grade **VVS 2**

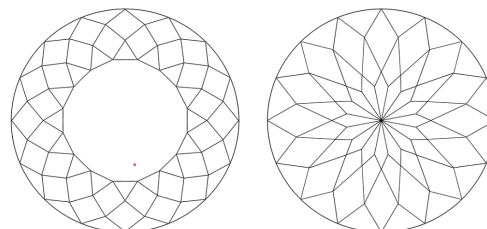


Sample Image Used

PROPORTIONS



CLARITY CHARACTERISTICS



KEY TO SYMBOLS

Red symbols indicate internal characteristics.
Green symbols indicate external characteristics.

COLOR

D E F G H I J Faint Very Light Light

CLARITY

FL	IF	VVS ¹⁻²	VS ¹⁻²	SI ¹⁻²	I ¹⁻³
Flawless	Internally Flawless	Very Very Slightly Included	Very Slightly Included	Slightly Included	Included

ADDITIONAL GRADING INFORMATION

Polish **EXCELLENT**
Symmetry **EXCELLENT**
Fluorescence **NONE**
Inscription(s) **IGI LG808622324**
Comments: This Laboratory Grown Diamond was created by Chemical Vapor Deposition (CVD) growth process. Type IIa



June 9, 2026
IGI Report No. LG808622324
ROUND MODIFIED BRILLIANT
8.57 - 8.57 X 4.71 MM
2.55 CARATS
E
VVS 2
66%
65%
Medium to Slightly Thick (Faceted)
Pointed
EXCELLENT
EXCELLENT
NONE
IGI LG808622324
Comments: This Laboratory Grown Diamond was created by Chemical Vapor Deposition (CVD) growth process. Type IIa