



**ELECTRONIC COPY**

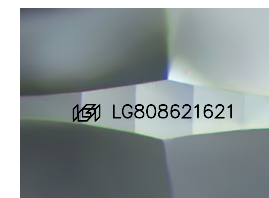
LG808621621  
Report verification at igi.org



June 10, 2026  
IGI Report Number **LG808621621**  
Description **LABORATORY GROWN DIAMOND**  
Shape and Cutting Style **OLD EUROPEAN CUT**  
Measurements **9.01 - 9.06 X 5.68 MM**

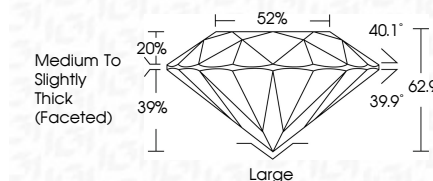
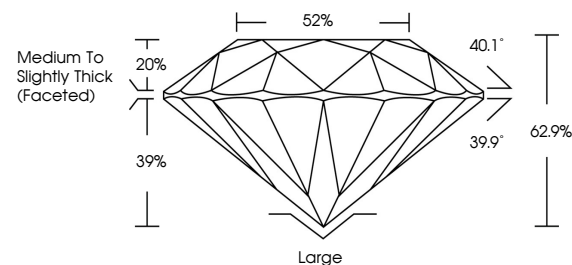
**GRADING RESULTS**

Carat Weight **3.09 CARATS**  
Color Grade **FANCY VIVID BLuish GREEN**  
Clarity Grade **VVS 2**

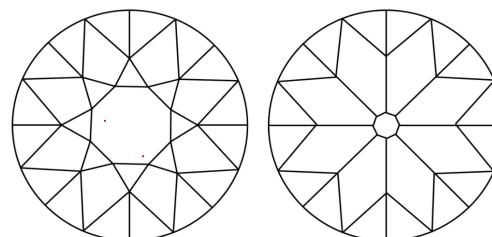


Sample Image Used

**PROPORTIONS**



**CLARITY CHARACTERISTICS**



**KEY TO SYMBOLS**

Red symbols indicate internal characteristics.  
Green symbols indicate external characteristics.

**COLOR**

D E F G H I J Faint Very Light Light

**CLARITY**

FL	IF	VVS <sup>1-2</sup>	VS <sup>1-2</sup>	SI <sup>1-2</sup>	I <sup>1-3</sup>
Flawless	Internally Flawless	Very Very Slightly Included	Very Slightly Included	Slightly Included	Included

**ADDITIONAL GRADING INFORMATION**

Polish **EXCELLENT**  
Symmetry **EXCELLENT**  
Fluorescence **NONE**  
Inscription(s) **IGI LG808621621**  
Comments: This Laboratory Grown Diamond was created by Chemical Vapor Deposition (CVD) growth process. Indications of post-growth treatment.



June 10, 2026  
IGI Report No. LG808621621  
OLD EUROPEAN CUT

3.09 CARATS  
Carat Weight  
Color Grade  
FANCY VIVID BLuish GREEN  
Clarity Grade  
VVS 2  
Depth  
62.9%  
Girdle  
62%  
Medium to Slightly Thick (Faceted)  
Culet  
Large  
Polish  
EXCELLENT  
Symmetry  
EXCELLENT  
Fluorescence  
NONE  
Inscription(s)  
IGI LG808621621

Comments: This Laboratory Grown Diamond was created by Chemical Vapor Deposition (CVD) growth process. Indications of post-growth treatment.