



LABORATORY GROWN DIAMOND REPORT

June 17, 2026
 IGI Report Number **LG808620180**
 Description **LABORATORY GROWN DIAMOND**
 Shape and Cutting Style **HALF MOON MODIFIED BRILLIANT**
 Measurements **7.17 X 4.12 X 3.22 MM**

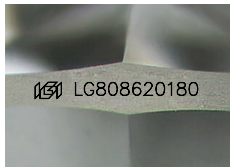
GRADING RESULTS

Carat Weight **0.71 CARAT**
 Color Grade **E**
 Clarity Grade **VS 1**

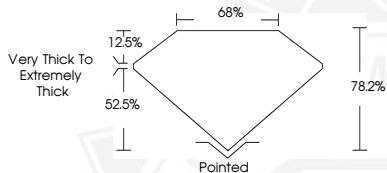
ADDITIONAL GRADING INFORMATION

Polish **VERY GOOD**
 Symmetry **VERY GOOD**
 Fluorescence **NONE**
 Inscription(s) **IGI LG808620180**

Comments: This Laboratory Grown Diamond was created by
 Chemical Vapor Deposition (CVD) growth process.
 Type IIa



Sample Image Used



June 17, 2026

IGI Report Number **LG808620180**
 HALF MOON MODIFIED BRILLIANT
 LABORATORY GROWN DIAMOND
 7.17 X 4.12 X 3.22 MM

Carat Weight **0.71 CARAT**
 Color Grade **E**
 Clarity Grade **VS 1**
 Polish **VERY GOOD**
 Symmetry **VERY GOOD**
 Fluorescence **NONE**
 Inscription(s) **IGI LG808620180**

Comments: This Laboratory Grown
 Diamond was created by
 Chemical Vapor Deposition (CVD)
 growth process. Type IIa



June 17, 2026

IGI Report Number **LG808620180**
 HALF MOON MODIFIED BRILLIANT
 LABORATORY GROWN DIAMOND
 7.17 X 4.12 X 3.22 MM

Carat Weight **0.71 CARAT**
 Color Grade **E**
 Clarity Grade **VS 1**
 Polish **VERY GOOD**
 Symmetry **VERY GOOD**
 Fluorescence **NONE**
 Inscription(s) **IGI LG808620180**

Comments: This Laboratory Grown
 Diamond was created by
 Chemical Vapor Deposition (CVD)
 growth process. Type IIa



THIS DOCUMENT WAS PRODUCED WITH THE FOLLOWING SECURITY MEASURES: SPECIAL DOCUMENT PAPER, INK SCREENS, WATERMARK, BACKGROUND DESIGNS, HOLOGRAM AND OTHER SECURITY FEATURES NOT LISTED AND DO EXCEED DOCUMENT SECURITY INDUSTRY GUIDELINES.