



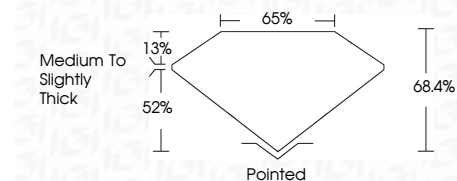
ELECTRONIC COPY

LG808616519
Report verification at igi.org



June 16, 2026
IGI Report Number LG808616519
Description LABORATORY GROWN DIAMOND
Shape and Cutting Style CUT CORNERED RECTANGULAR MODIFIED BRILLIANT
Measurements 9.85 X 6.61 X 4.52 MM

GRADING RESULTS
Carat Weight 2.58 CARATS
Color Grade FANCY INTENSE PINK
Clarity Grade VVS 2



ADDITIONAL GRADING INFORMATION
Polish VERY GOOD
Symmetry EXCELLENT
Fluorescence STRONG
Inscription(s) IGI LG808616519
Comments: This Laboratory Grown Diamond was created by Chemical Vapor Deposition (CVD) growth process. Indications of post-growth treatment.



June 16, 2026
IGI Report No LG808616519
CUT CORNERED RECT. MODIFIED BRILLIANT
9.85 X 6.61 X 4.52 MM
2.58 CARATS
FANCY INTENSE PINK
VVS 2
68.4%
65%
Medium to Slightly Thick
Pointed
VERY GOOD
EXCELLENT
STRONG
IGI LG808616519
Comments: This Laboratory Grown Diamond was created by Chemical Vapor Deposition (CVD) growth process. Indications of post-growth treatment.

LABORATORY GROWN DIAMOND REPORT

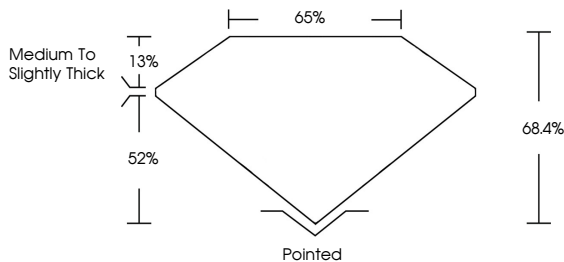
June 16, 2026
IGI Report Number LG808616519
Description LABORATORY GROWN DIAMOND
Shape and Cutting Style CUT CORNERED RECTANGULAR MODIFIED BRILLIANT
Measurements 9.85 X 6.61 X 4.52 MM

GRADING RESULTS
Carat Weight 2.58 CARATS
Color Grade FANCY INTENSE PINK
Clarity Grade VVS 2

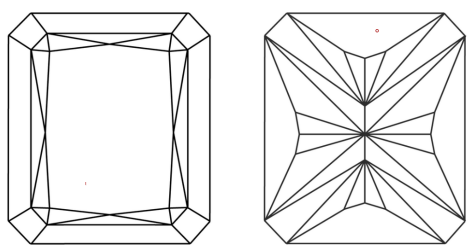
ADDITIONAL GRADING INFORMATION
Polish VERY GOOD
Symmetry EXCELLENT
Fluorescence STRONG
Inscription(s) IGI LG808616519

Comments: This Laboratory Grown Diamond was created by Chemical Vapor Deposition (CVD) growth process. Indications of post-growth treatment.

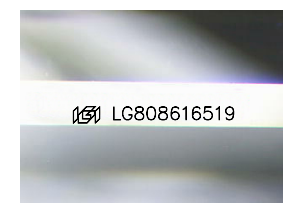
PROPORTIONS



CLARITY CHARACTERISTICS



KEY TO SYMBOLS
Red symbols indicate internal characteristics.
Green symbols indicate external characteristics.



Sample Image Used

Table for COLOR grading: D, E, F, G, H, I, J, Faint, Very Light, Light

Table for CLARITY grading: FL, IF, VVS 1-2, VS 1-2, SI 1-2, I 1-3, Flawless, Internally Flawless, Very Very Slightly Included, Very Slightly Included, Slightly Included, Included

