



**ELECTRONIC COPY**

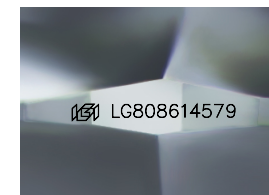
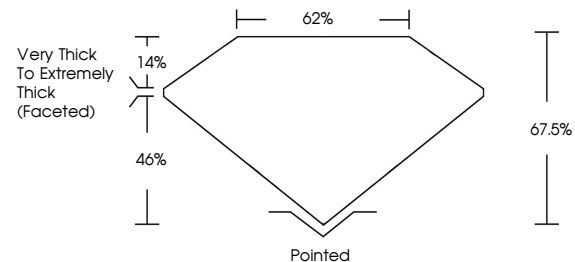
LG808614579  
Report verification at igi.org



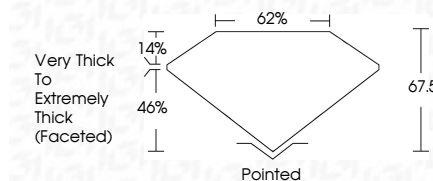
June 8, 2026  
IGI Report Number **LG808614579**  
Description **LABORATORY GROWN DIAMOND**  
Shape and Cutting Style **SQUARE CUSHION MODIFIED BRILLIANT**  
Measurements **8.89 X 8.59 X 5.80 MM**  
**GRADING RESULTS**  
Carat Weight **3.52 CARATS**  
Color Grade **F**  
Clarity Grade **VS 2**

June 8, 2026  
IGI Report Number **LG808614579**  
Description **LABORATORY GROWN DIAMOND**  
Shape and Cutting Style **SQUARE CUSHION MODIFIED BRILLIANT**  
Measurements **8.89 X 8.59 X 5.80 MM**  
**GRADING RESULTS**  
Carat Weight **3.52 CARATS**  
Color Grade **F**  
Clarity Grade **VS 2**

**PROPORTIONS**



Sample Image Used



**ADDITIONAL GRADING INFORMATION**

Polish **EXCELLENT**  
Symmetry **EXCELLENT**  
Fluorescence **NONE**  
Inscription(s) **IGI LG808614579**

Comments: This Laboratory Grown Diamond was created by Chemical Vapor Deposition (CVD) growth process. Type IIa

**ADDITIONAL GRADING INFORMATION**

Polish **EXCELLENT**  
Symmetry **EXCELLENT**  
Fluorescence **NONE**  
Inscription(s) **IGI LG808614579**  
Comments: This Laboratory Grown Diamond was created by Chemical Vapor Deposition (CVD) growth process. Type IIa

**COLOR**

D E F G H I J Faint Very Light Light

**CLARITY**

FL	IF	VS <sup>1-2</sup>	VS <sup>1-2</sup>	SI <sup>1-2</sup>	I <sup>1-3</sup>
Flawless	Internally Flawless	Very Very Slightly Included	Very Slightly Included	Slightly Included	Included



**IGI**



June 8, 2026  
IGI Report No. **LG808614579**  
**SQUARE CUSHION MODIFIED BRILLIANT**  
**8.89 X 8.59 X 5.80 MM**  
Carat Weight **3.52 CARATS**  
Color Grade **F**  
Clarity Grade **VS 2**  
Depth **67.0%**  
Table **62%**  
Girdle **Very Thick to Extremely Thick (Faceted)**  
Culet **Pointed**  
Polish **EXCELLENT**  
Symmetry **EXCELLENT**  
Fluorescence **NONE**  
Inscription(s) **IGI LG808614579**  
Comments: This Laboratory Grown Diamond was created by Chemical Vapor Deposition (CVD) growth process. Type IIa