



ELECTRONIC COPY

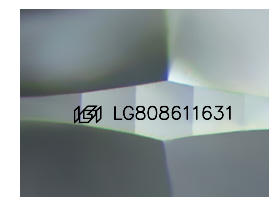
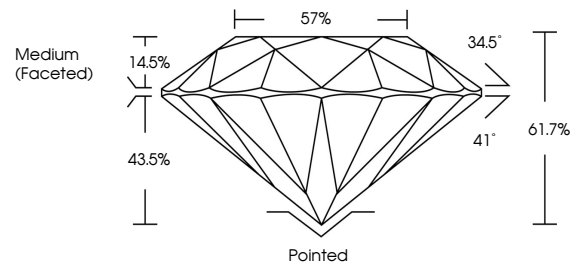
LG808611631
Report verification at igi.org



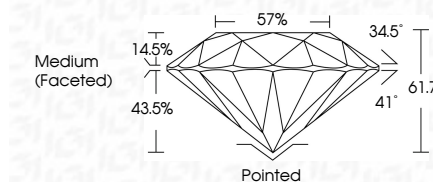
June 9, 2026
IGI Report Number **LG808611631**
Description **LABORATORY GROWN DIAMOND**
Shape and Cutting Style **ROUND BRILLIANT**
Measurements **9.30 - 9.34 X 5.75 MM**
GRADING RESULTS
Carat Weight **3.05 CARATS**
Color Grade **F**
Clarity Grade **VVS 2**
Cut Grade **IDEAL**

June 9, 2026
IGI Report Number **LG808611631**
Description **LABORATORY GROWN DIAMOND**
Shape and Cutting Style **ROUND BRILLIANT**
Measurements **9.30 - 9.34 X 5.75 MM**
GRADING RESULTS
Carat Weight **3.05 CARATS**
Color Grade **F**
Clarity Grade **VVS 2**
Cut Grade **IDEAL**

PROPORTIONS



Sample Image Used



ADDITIONAL GRADING INFORMATION

Polish **EXCELLENT**
Symmetry **EXCELLENT**
Fluorescence **NONE**
Inscription(s) **IGI LG808611631**

Comments: This Laboratory Grown Diamond was created by Chemical Vapor Deposition (CVD) growth process. Type IIa

ADDITIONAL GRADING INFORMATION

Polish **EXCELLENT**
Symmetry **EXCELLENT**
Fluorescence **NONE**
Inscription(s) **IGI LG808611631**
Comments: This Laboratory Grown Diamond was created by Chemical Vapor Deposition (CVD) growth process. Type IIa

COLOR

D E F G H I J Faint Very Light Light

CLARITY

FL	IF	VS ¹⁻²	VS ¹⁻²	SI ¹⁻²	I ¹⁻³
Flawless	Internally Flawless	Very Very Slightly Included	Very Slightly Included	Slightly Included	Included



IGI



June 9, 2026
IGI Report No. LG808611631
ROUND BRILLIANT
9.30 - 9.34 X 5.75 MM
3.05 CARATS
Color Grade **F**
Clarity Grade **VVS 2**
Depth **IDEAL**
Table **61.7%**
Girdle **57%**
Medium (Faceted)
Culet **Pointed**
Polish **EXCELLENT**
Symmetry **EXCELLENT**
Fluorescence **NONE**
Inscriptions(s) **IGI LG808611631**
Comments: This Laboratory Grown Diamond was created by Chemical Vapor Deposition (CVD) growth process. Type IIa