



ELECTRONIC COPY

LG808609433
Report verification at igi.org



June 10, 2026
IGI Report Number **LG808609433**
Description **LABORATORY GROWN DIAMOND**
Shape and Cutting Style **ROUND BRILLIANT**
Measurements **7.62 - 7.66 X 4.54 MM**
GRADING RESULTS
Carat Weight **1.60 CARAT**
Color Grade **FANCY INTENSE PINK**
Clarity Grade **VVS 2**
Cut Grade **IDEAL**

June 10, 2026
IGI Report Number **LG808609433**
Description **LABORATORY GROWN DIAMOND**
Shape and Cutting Style **ROUND BRILLIANT**
Measurements **7.62 - 7.66 X 4.54 MM**

GRADING RESULTS

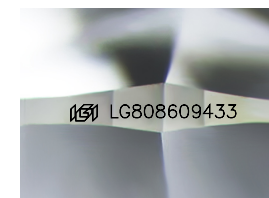
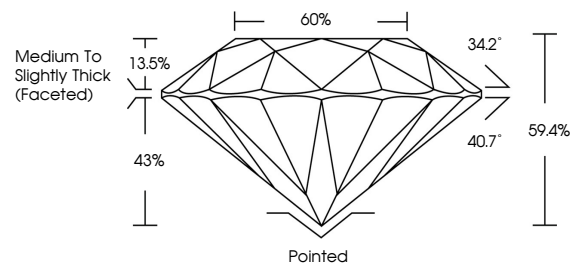
Carat Weight **1.60 CARAT**
Color Grade **FANCY INTENSE PINK**
Clarity Grade **VVS 2**
Cut Grade **IDEAL**

ADDITIONAL GRADING INFORMATION

Polish **EXCELLENT**
Symmetry **EXCELLENT**
Fluorescence **SLIGHT**
Inscription(s) **LG808609433**

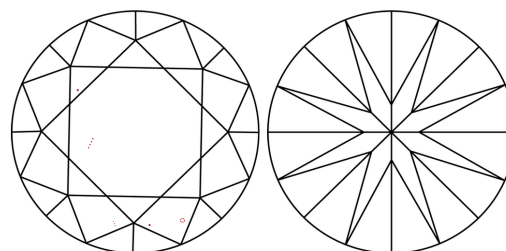
Comments: This Laboratory Grown Diamond was created by Chemical Vapor Deposition (CVD) growth process.
Indications of post-growth treatment.

PROPORTIONS



Sample Image Used

CLARITY CHARACTERISTICS



KEY TO SYMBOLS

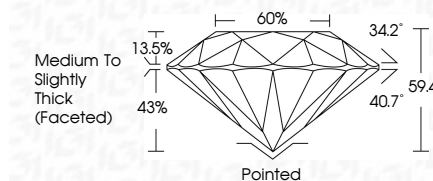
Red symbols indicate internal characteristics.
Green symbols indicate external characteristics.

COLOR

D E F G H I J Faint Very Light Light

CLARITY

FL	IF	VVS ¹⁻²	VS ¹⁻²	SI ¹⁻²	I ¹⁻³
Flawless	Internally Flawless	Very Very Slightly Included	Very Slightly Included	Slightly Included	Included



ADDITIONAL GRADING INFORMATION

Polish **EXCELLENT**
Symmetry **EXCELLENT**
Fluorescence **SLIGHT**
Inscription(s) **LG808609433**
Comments: This Laboratory Grown Diamond was created by Chemical Vapor Deposition (CVD) growth process.
Indications of post-growth treatment.



June 10, 2026
IGI Report No **LG808609433**
ROUND BRILLIANT
7.62 - 7.66 X 4.54 MM
Carat Weight **1.60 CARAT**
Color Grade **FANCY INTENSE PINK**
Clarity Grade **VVS 2**
Cut Grade **IDEAL**
Depth **59.4%**
Table **60%**
Girdle **Medium To Slightly Thick (Faceted)**
Culet **Pointed**
Polish **EXCELLENT**
Symmetry **EXCELLENT**
Fluorescence **SLIGHT**
Inscription(s) **LG808609433**
Comments: This Laboratory Grown Diamond was created by Chemical Vapor Deposition (CVD) growth process.
Indications of post-growth treatment.