



**ELECTRONIC COPY**

LG808609141  
Report verification at igi.org



July 1, 2026  
IGI Report Number **LG808609141**  
Description **LABORATORY GROWN DIAMOND**  
Shape and Cutting Style **CUSHION MODIFIED BRILLIANT**  
Measurements **6.73 X 5.08 X 3.40 MM**  
**GRADING RESULTS**  
Carat Weight **1.07 CARAT**  
Color Grade **FANCY VIVID PINK**  
Clarity Grade **VS 1**

July 1, 2026  
IGI Report Number **LG808609141**  
Description **LABORATORY GROWN DIAMOND**  
Shape and Cutting Style **CUSHION MODIFIED BRILLIANT**  
Measurements **6.73 X 5.08 X 3.40 MM**

**GRADING RESULTS**

Carat Weight **1.07 CARAT**  
Color Grade **FANCY VIVID PINK**  
Clarity Grade **VS 1**

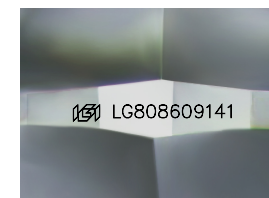
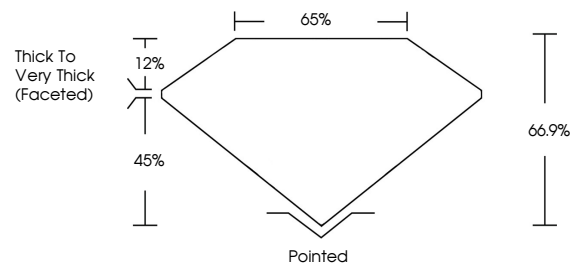
**ADDITIONAL GRADING INFORMATION**

Polish **VERY GOOD**  
Symmetry **EXCELLENT**  
Fluorescence **STRONG**  
Inscription(s) **LG808609141**

Comments: This Laboratory Grown Diamond was created by Chemical Vapor Deposition (CVD) growth process.  
Indications of post-growth treatment.

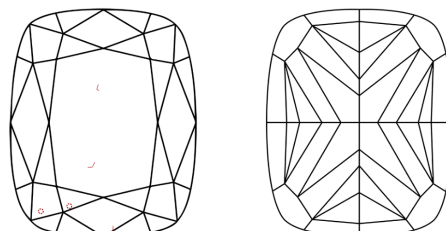
Secondary color: Orange

**PROPORTIONS**



Sample Image Used

**CLARITY CHARACTERISTICS**



**KEY TO SYMBOLS**

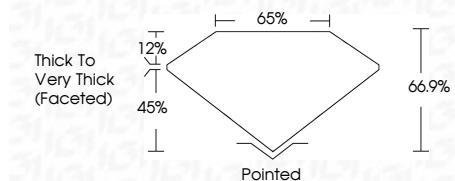
Red symbols indicate internal characteristics.  
Green symbols indicate external characteristics.

**COLOR**

D E F G H I J Faint Very Light Light

**CLARITY**

FL	IF	VS <sup>1-2</sup>	VS <sup>1-2</sup>	SI <sup>1-2</sup>	I <sup>1-3</sup>
Flawless	Internally Flawless	Very Very Slightly Included	Very Slightly Included	Slightly Included	Included



**ADDITIONAL GRADING INFORMATION**

Polish **VERY GOOD**  
Symmetry **EXCELLENT**  
Fluorescence **STRONG**  
Inscription(s) **LG808609141**  
Comments: This Laboratory Grown Diamond was created by Chemical Vapor Deposition (CVD) growth process.  
Indications of post-growth treatment.  
Secondary color: Orange



July 1, 2026  
IGI Report No **LG808609141**  
**CUSHION MODIFIED BRILLIANT**  
6.73 X 5.08 X 3.40 MM  
1.07 CARAT  
FANCY VIVID PINK  
VS 1  
66.9%  
45%  
12%  
Thick to Very Thick (Faceted)  
Pointed  
VERY GOOD  
EXCELLENT  
STRONG  
Faint  
IGI LG808609141  
Comments: This Laboratory Grown Diamond was created by Chemical Vapor Deposition (CVD) growth process.  
Indications of post-growth treatment.  
Secondary color: Orange