



**ELECTRONIC COPY**

LG808609115  
Report verification at igi.org



June 26, 2026  
IGI Report Number **LG808609115**  
Description **LABORATORY GROWN DIAMOND**  
Shape and Cutting Style **PEAR BRILLIANT**  
Measurements **10.66 X 6.56 X 3.74 MM**  
**GRADING RESULTS**  
Carat Weight **1.83 CARAT**  
Color Grade **FANCY VIVID PINK**  
Clarity Grade **VS 1**

June 26, 2026  
IGI Report Number **LG808609115**  
Description **LABORATORY GROWN DIAMOND**  
Shape and Cutting Style **PEAR BRILLIANT**  
Measurements **10.66 X 6.56 X 3.74 MM**

**GRADING RESULTS**

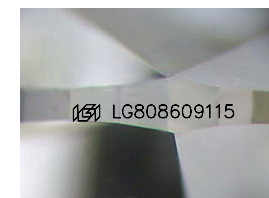
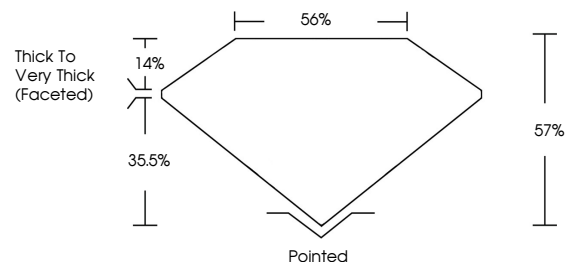
Carat Weight **1.83 CARAT**  
Color Grade **FANCY VIVID PINK**  
Clarity Grade **VS 1**

**ADDITIONAL GRADING INFORMATION**

Polish **VERY GOOD**  
Symmetry **VERY GOOD**  
Fluorescence **STRONG**  
Inscription(s) **IGI LG808609115**

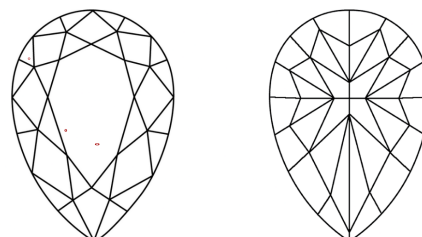
Comments: This Laboratory Grown Diamond was created by Chemical Vapor Deposition (CVD) growth process.  
Indications of post-growth treatment.

**PROPORTIONS**



Sample Image Used

**CLARITY CHARACTERISTICS**



**KEY TO SYMBOLS**

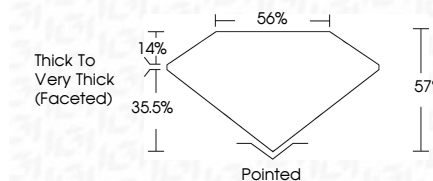
Red symbols indicate internal characteristics.  
Green symbols indicate external characteristics.

**COLOR**

D E F G H I J Faint Very Light Light

**CLARITY**

FL	IF	VS <sup>1-2</sup>	VS <sup>1-2</sup>	SI <sup>1-2</sup>	I <sup>1-3</sup>
Flawless	Internally Flawless	Very Very Slightly Included	Very Slightly Included	Slightly Included	Included



**ADDITIONAL GRADING INFORMATION**

Polish **VERY GOOD**  
Symmetry **VERY GOOD**  
Fluorescence **STRONG**  
Inscription(s) **IGI LG808609115**  
Comments: This Laboratory Grown Diamond was created by Chemical Vapor Deposition (CVD) growth process.  
Indications of post-growth treatment.



June 26, 2026  
IGI Report No LG808609115  
PEAR BRILLIANT  
10.66 X 6.56 X 3.74 MM  
1.83 CARAT  
FANCY VIVID PINK  
VS 1  
57%  
35%  
Thick to Very Thick (Faceted)  
Pointed  
Polish VERY GOOD  
Symmetry VERY GOOD  
Fluorescence STRONG  
Inscription(s) IGI LG808609115  
Comments: This Laboratory Grown Diamond was created by Chemical Vapor Deposition (CVD) growth process.  
Indications of post-growth treatment.