



ELECTRONIC COPY

LG808609074
Report verification at igi.org



June 29, 2026
IGI Report Number **LG808609074**
Description **LABORATORY GROWN DIAMOND**
Shape and Cutting Style **CUT CORNERED SQUARE
MODIFIED BRILLIANT**
Measurements **6.40 X 6.36 X 4.09 MM**
GRADING RESULTS
Carat Weight **1.70 CARAT**
Color Grade **FANCY INTENSE PINK**
Clarity Grade **VVS 2**

LABORATORY GROWN DIAMOND REPORT

June 29, 2026
IGI Report Number **LG808609074**
Description **LABORATORY GROWN DIAMOND**
Shape and Cutting Style **CUT CORNERED SQUARE
MODIFIED BRILLIANT**
Measurements **6.40 X 6.36 X 4.09 MM**

GRADING RESULTS

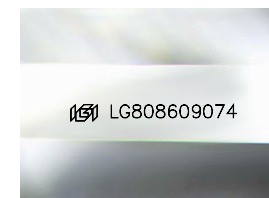
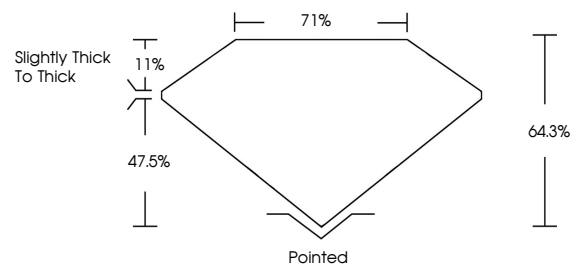
Carat Weight **1.70 CARAT**
Color Grade **FANCY INTENSE PINK**
Clarity Grade **VVS 2**

ADDITIONAL GRADING INFORMATION

Polish **VERY GOOD**
Symmetry **GOOD**
Fluorescence **SLIGHT**
Inscription(s) **IGI LG808609074**

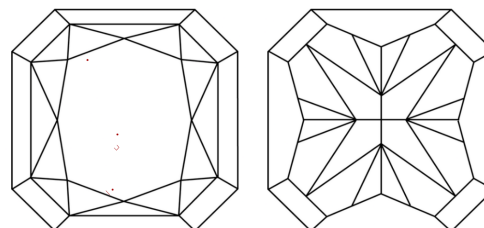
Comments: This Laboratory Grown Diamond was created by Chemical Vapor Deposition (CVD) growth process.
Indications of post-growth treatment.

PROPORTIONS



Sample Image Used

CLARITY CHARACTERISTICS



KEY TO SYMBOLS

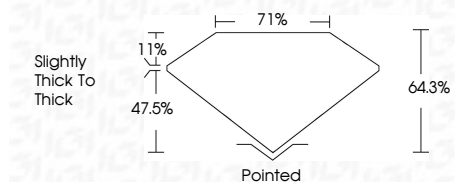
Red symbols indicate internal characteristics.
Green symbols indicate external characteristics.

COLOR

D E F G H I J Faint Very Light Light

CLARITY

FL	IF	VVS ¹⁻²	VS ¹⁻²	SI ¹⁻²	I ¹⁻³
Flawless	Internally Flawless	Very Very Slightly Included	Very Slightly Included	Slightly Included	Included



ADDITIONAL GRADING INFORMATION

Polish **VERY GOOD**
Symmetry **GOOD**
Fluorescence **SLIGHT**
Inscription(s) **IGI LG808609074**
Comments: This Laboratory Grown Diamond was created by Chemical Vapor Deposition (CVD) growth process.
Indications of post-growth treatment.



IGI



June 29, 2026
IGI Report No. **LG808609074**
CUT CORNERED SQUARE MODIFIED BRILLIANT
6.40 X 6.36 X 4.09 MM
Carat Weight **1.70 CARAT**
Color Grade **FANCY INTENSE PINK**
Clarity Grade **VVS 2**
Depth **47.5%**
Table **11%**
Girdle **Slightly thick to thick**
Culet **Pointed**
Polish **VERY GOOD**
Symmetry **GOOD**
Fluorescence **SLIGHT**
Inscription(s) **IGI LG808609074**
Comments: This Laboratory Grown Diamond was created by Chemical Vapor Deposition (CVD) growth process.
Indications of post-growth treatment.