



ELECTRONIC COPY

LG808609071
Report verification at igi.org



June 29, 2026
IGI Report Number **LG808609071**
Description **LABORATORY GROWN DIAMOND**
Shape and Cutting Style **HEART MODIFIED BRILLIANT**
Measurements **6.04 X 7.09 X 4.01 MM**
GRADING RESULTS
Carat Weight **1.33 CARAT**
Color Grade **FANCY VIVID PINK**
Clarity Grade **VVS 2**

June 29, 2026
IGI Report Number **LG808609071**
Description **LABORATORY GROWN DIAMOND**
Shape and Cutting Style **HEART MODIFIED BRILLIANT**
Measurements **6.04 X 7.09 X 4.01 MM**

GRADING RESULTS

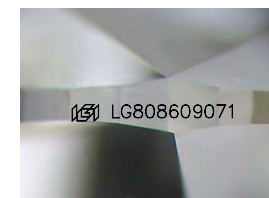
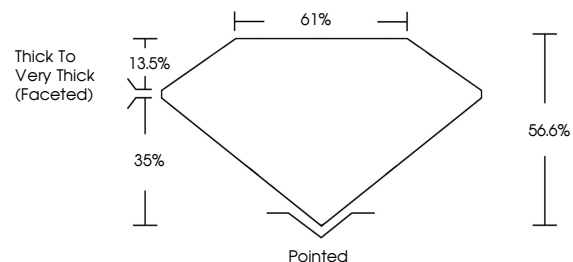
Carat Weight **1.33 CARAT**
Color Grade **FANCY VIVID PINK**
Clarity Grade **VVS 2**

ADDITIONAL GRADING INFORMATION

Polish **EXCELLENT**
Symmetry **VERY GOOD**
Fluorescence **STRONG**
Inscription(s) **IGI LG808609071**

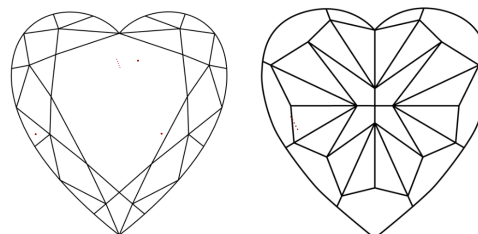
Comments: This Laboratory Grown Diamond was created by Chemical Vapor Deposition (CVD) growth process.
Indications of post-growth treatment.

PROPORTIONS



Sample Image Used

CLARITY CHARACTERISTICS



KEY TO SYMBOLS

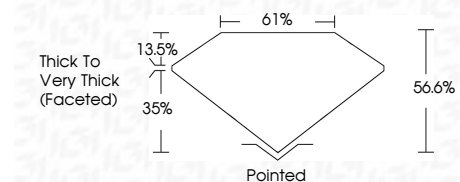
Red symbols indicate internal characteristics.
Green symbols indicate external characteristics.

COLOR

D E F G H I J Faint Very Light Light

CLARITY

FL	IF	VVS ¹⁻²	VS ¹⁻²	SI ¹⁻²	I ¹⁻³
Flawless	Internally Flawless	Very Very Slightly Included	Very Slightly Included	Slightly Included	Included



ADDITIONAL GRADING INFORMATION

Polish **EXCELLENT**
Symmetry **VERY GOOD**
Fluorescence **STRONG**
Inscription(s) **IGI LG808609071**
Comments: This Laboratory Grown Diamond was created by Chemical Vapor Deposition (CVD) growth process.
Indications of post-growth treatment.



June 29, 2026
IGI Report No **LG808609071**
HEART MODIFIED BRILLIANT
6.04 X 7.09 X 4.01 MM
1.33 CARAT
FANCY VIVID PINK
VVS 2
56.6%
61%
Thick to Very Thick (Faceted)
Pointed
EXCELLENT
VERY GOOD
STRONG
IGI LG808609071
Comments: This Laboratory Grown Diamond was created by Chemical Vapor Deposition (CVD) growth process.
Indications of post-growth treatment.