



LABORATORY GROWN DIAMOND REPORT

June 19, 2026
 IGI Report Number **LG808608834**
 Description **LABORATORY GROWN DIAMOND**
 Shape and Cutting Style **HEART MODIFIED BRILLIANT**
 Measurements **5.16 X 5.79 X 3.22 MM**

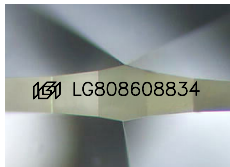
GRADING RESULTS

Carat Weight **0.71 CARAT**
 Color Grade **FANCY YELLOW**
 Clarity Grade **VS 1**

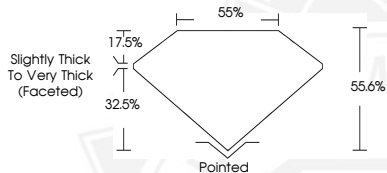
ADDITIONAL GRADING INFORMATION

Polish **EXCELLENT**
 Symmetry **EXCELLENT**
 Fluorescence **NONE**
 Inscription(s) **IGI LG808608834**

Comments: This Laboratory Grown Diamond was created by Chemical Vapor Deposition (CVD) growth process.



Sample Image Used



June 19, 2026
 IGI Report Number **LG808608834**
 HEART MODIFIED BRILLIANT
 LABORATORY GROWN DIAMOND
 5.16 X 5.79 X 3.22 MM
 Carat Weight **0.71 CARAT**
 Color Grade **FANCY YELLOW**
 Clarity Grade **VS 1**
 Polish **EXCELLENT**
 Symmetry **EXCELLENT**
 Fluorescence **NONE**
 Inscription(s) **IGI LG808608834**

Comments: This Laboratory Grown Diamond was created by Chemical Vapor Deposition (CVD) growth process.



June 19, 2026
 IGI Report Number **LG808608834**
 HEART MODIFIED BRILLIANT
 LABORATORY GROWN DIAMOND
 5.16 X 5.79 X 3.22 MM
 Carat Weight **0.71 CARAT**
 Color Grade **FANCY YELLOW**
 Clarity Grade **VS 1**
 Polish **EXCELLENT**
 Symmetry **EXCELLENT**
 Fluorescence **NONE**
 Inscription(s) **IGI LG808608834**

Comments: This Laboratory Grown Diamond was created by Chemical Vapor Deposition (CVD) growth process.



THIS DOCUMENT WAS PRODUCED WITH THE FOLLOWING SECURITY MEASURES: SPECIAL DOCUMENT PAPER, INK SCREENS, WATERMARK, BACKGROUND DESIGNS, HOLOGRAM AND OTHER SECURITY FEATURES NOT LISTED AND DO EXCEED DOCUMENT SECURITY INDUSTRY GUIDELINES.