



ELECTRONIC COPY

LG808608805
Report verification at igi.org



June 19, 2026
IGI Report Number **LG808608805**
Description **LABORATORY GROWN DIAMOND**
Shape and Cutting Style **PEAR MODIFIED BRILLIANT**
Measurements **9.07 X 5.70 X 3.51 MM**
GRADING RESULTS
Carat Weight **1.29 CARAT**
Color Grade **FANCY VIVID YELLOW**
Clarity Grade **VVS 2**

June 19, 2026
IGI Report Number **LG808608805**
Description **LABORATORY GROWN DIAMOND**
Shape and Cutting Style **PEAR MODIFIED BRILLIANT**
Measurements **9.07 X 5.70 X 3.51 MM**

GRADING RESULTS

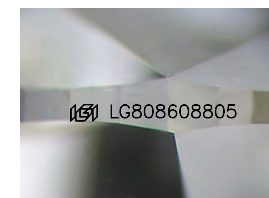
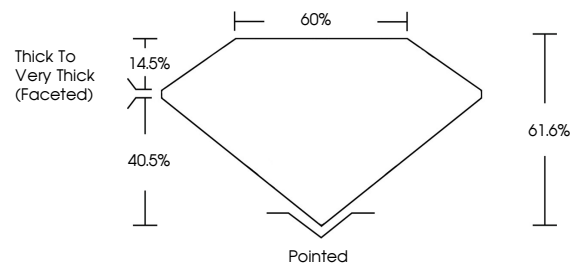
Carat Weight **1.29 CARAT**
Color Grade **FANCY VIVID YELLOW**
Clarity Grade **VVS 2**

ADDITIONAL GRADING INFORMATION

Polish **EXCELLENT**
Symmetry **EXCELLENT**
Fluorescence **NONE**
Inscription(s) **IGI LG808608805**

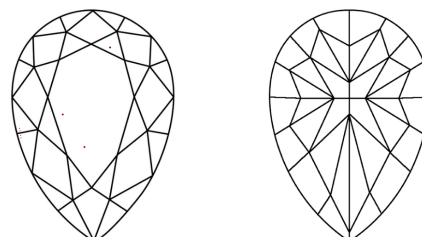
Comments: This Laboratory Grown Diamond was created by Chemical Vapor Deposition (CVD) growth process.

PROPORTIONS



Sample Image Used

CLARITY CHARACTERISTICS



KEY TO SYMBOLS

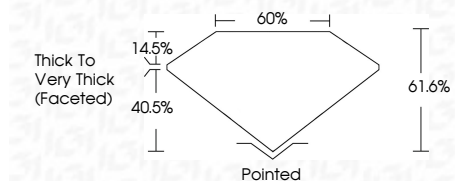
Red symbols indicate internal characteristics.
Green symbols indicate external characteristics.

COLOR

D E F G H I J Faint Very Light Light

CLARITY

| FL | IF | VVS ¹⁻² | VS ¹⁻² | SI ¹⁻² | I ¹⁻³ |
|----------|---------------------|-----------------------------|------------------------|-------------------|------------------|
| Flawless | Internally Flawless | Very Very Slightly Included | Very Slightly Included | Slightly Included | Included |



ADDITIONAL GRADING INFORMATION

Polish **EXCELLENT**
Symmetry **EXCELLENT**
Fluorescence **NONE**
Inscription(s) **IGI LG808608805**
Comments: This Laboratory Grown Diamond was created by Chemical Vapor Deposition (CVD) growth process.



June 19, 2026
IGI Report No. **LG808608805**
PEAR MODIFIED BRILLIANT
9.07 X 5.70 X 3.51 MM
1.29 CARAT
Color Grade **FANCY VIVID YELLOW**
Clarity Grade **VVS 2**
Depth **61.6%**
Table **60%**
Girdle **Thick to Very Thick (Faceted)**
Culet **Pointed**
Polish **EXCELLENT**
Symmetry **EXCELLENT**
Fluorescence **NONE**
Inscription(s) **IGI LG808608805**
Comments: This Laboratory Grown Diamond was created by Chemical Vapor Deposition (CVD) growth process.