



LABORATORY GROWN DIAMOND REPORT

June 18, 2026
 IGI Report Number **LG808608717**
 Description **LABORATORY GROWN DIAMOND**
 Shape and Cutting Style **HEART MODIFIED BRILLIANT**
 Measurements **5.32 X 6.56 X 3.35 MM**

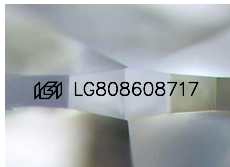
GRADING RESULTS

Carat Weight **0.93 CARAT**
 Color Grade **FANCY INTENSE PINK**
 Clarity Grade **VS 1**

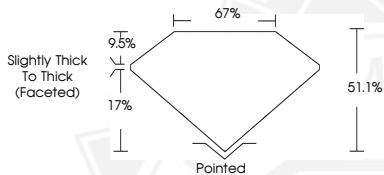
ADDITIONAL GRADING INFORMATION

Polish **EXCELLENT**
 Symmetry **EXCELLENT**
 Fluorescence **SLIGHT**
 Inscription(s) **IGI LG808608717**

Comments: This Laboratory Grown Diamond was created by Chemical Vapor Deposition (CVD) growth process. Indications of post-growth treatment.



Sample Image Used



June 18, 2026

IGI Report Number **LG808608717**
HEART MODIFIED BRILLIANT
LABORATORY GROWN DIAMOND
5.32 X 6.56 X 3.35 MM

Carat Weight **0.93 CARAT**
 Color Grade **FANCY INTENSE PINK**
 Clarity Grade **VS 1**
 Polish **EXCELLENT**
 Symmetry **EXCELLENT**
 Fluorescence **SLIGHT**
 Inscription(s) **IGI LG808608717**

Comments: This Laboratory Grown Diamond was created by Chemical Vapor Deposition (CVD) growth process. Indications of post-growth treatment.



June 18, 2026

IGI Report Number **LG808608717**
HEART MODIFIED BRILLIANT
LABORATORY GROWN DIAMOND
5.32 X 6.56 X 3.35 MM

Carat Weight **0.93 CARAT**
 Color Grade **FANCY INTENSE PINK**
 Clarity Grade **VS 1**
 Polish **EXCELLENT**
 Symmetry **EXCELLENT**
 Fluorescence **SLIGHT**
 Inscription(s) **IGI LG808608717**

Comments: This Laboratory Grown Diamond was created by Chemical Vapor Deposition (CVD) growth process. Indications of post-growth treatment.



THIS DOCUMENT WAS PRODUCED WITH THE FOLLOWING SECURITY MEASURES: SPECIAL DOCUMENT PAPER, INK SCREENS, WATERMARK, BACKGROUND DESIGNS, HOLOGRAM AND OTHER SECURITY FEATURES NOT LISTED AND DO EXCEED DOCUMENT SECURITY INDUSTRY GUIDELINES.