



ELECTRONIC COPY

LG808608657
Report verification at igi.org



June 17, 2026
IGI Report Number **LG808608657**
Description **LABORATORY GROWN DIAMOND**
Shape and Cutting Style **CUSHION MODIFIED BRILLIANT**
Measurements **6.55 X 5.40 X 3.47 MM**
GRADING RESULTS
Carat Weight **1.09 CARAT**
Color Grade **FANCY VIVID PINK**
Clarity Grade **VVS 2**

June 17, 2026
IGI Report Number **LG808608657**
Description **LABORATORY GROWN DIAMOND**
Shape and Cutting Style **CUSHION MODIFIED BRILLIANT**
Measurements **6.55 X 5.40 X 3.47 MM**

GRADING RESULTS

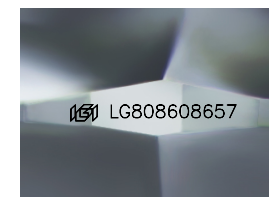
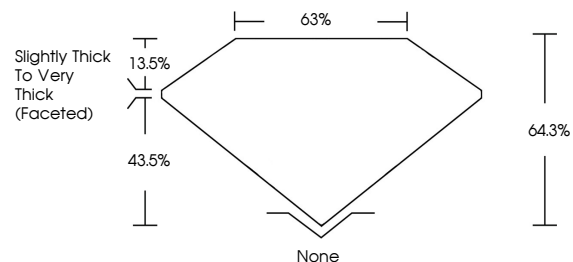
Carat Weight **1.09 CARAT**
Color Grade **FANCY VIVID PINK**
Clarity Grade **VVS 2**

ADDITIONAL GRADING INFORMATION

Polish **VERY GOOD**
Symmetry **EXCELLENT**
Fluorescence **STRONG**
Inscription(s) **IGI LG808608657**

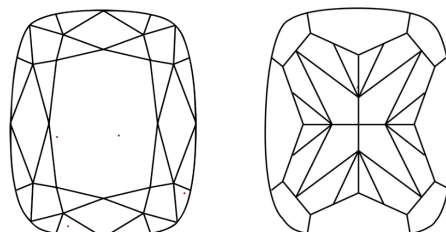
Comments: This Laboratory Grown Diamond was created by Chemical Vapor Deposition (CVD) growth process.

PROPORTIONS



Sample Image Used

CLARITY CHARACTERISTICS



KEY TO SYMBOLS

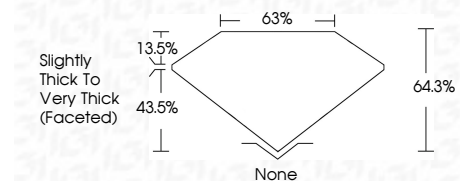
Red symbols indicate internal characteristics.
Green symbols indicate external characteristics.

COLOR

D E F G H I J Faint Very Light Light

CLARITY

FL	IF	VVS ¹⁻²	VS ¹⁻²	SI ¹⁻²	I ¹⁻³
Flawless	Internally Flawless	Very Very Slightly Included	Very Slightly Included	Slightly Included	Included



ADDITIONAL GRADING INFORMATION

Polish **VERY GOOD**
Symmetry **EXCELLENT**
Fluorescence **STRONG**
Inscription(s) **IGI LG808608657**
Comments: This Laboratory Grown Diamond was created by Chemical Vapor Deposition (CVD) growth process.



June 17, 2026
IGI Report No **LG808608657**
CUSHION MODIFIED BRILLIANT
6.55 X 5.40 X 3.47 MM
1.09 CARAT
FANCY VIVID PINK
VVS 2
64.3%
43.5%
Slightly Thick To Very Thick (Faceted)
None
VERY GOOD
EXCELLENT
STRONG
IGI LG808608657
Comments: This Laboratory Grown Diamond was created by Chemical Vapor Deposition (CVD) growth process.