



**ELECTRONIC COPY**

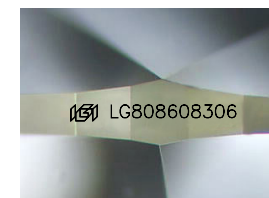
LG808608306  
Report verification at igi.org



June 17, 2026  
IGI Report Number **LG808608306**  
Description **LABORATORY GROWN DIAMOND**  
Shape and Cutting Style **PEAR MODIFIED BRILLIANT**  
Measurements **9.63 X 5.88 X 3.90 MM**

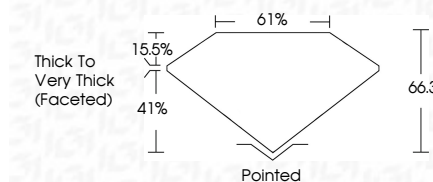
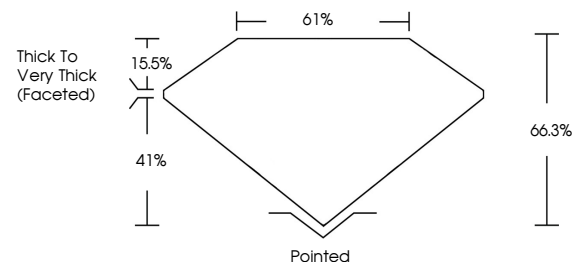
**GRADING RESULTS**

Carat Weight **1.60 CARAT**  
Color Grade **FANCY YELLOW**  
Clarity Grade **VVS 2**

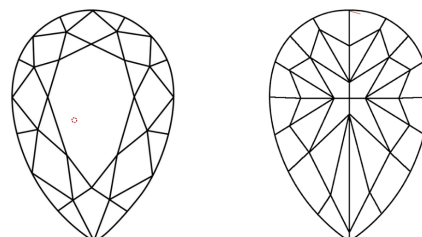


Sample Image Used

**PROPORTIONS**



**CLARITY CHARACTERISTICS**



**KEY TO SYMBOLS**

Red symbols indicate internal characteristics.  
Green symbols indicate external characteristics.

**COLOR**

D E F G H I J Faint Very Light Light

**CLARITY**

| FL       | IF                  | VVS <sup>1-2</sup>          | VS <sup>1-2</sup>      | SI <sup>1-2</sup> | I <sup>1-3</sup> |
|----------|---------------------|-----------------------------|------------------------|-------------------|------------------|
| Flawless | Internally Flawless | Very Very Slightly Included | Very Slightly Included | Slightly Included | Included         |

**ADDITIONAL GRADING INFORMATION**

Polish **VERY GOOD**  
Symmetry **EXCELLENT**  
Fluorescence **NONE**  
Inscription(s) **IGI LG808608306**  
Comments: This Laboratory Grown Diamond was created by Chemical Vapor Deposition (CVD) growth process.



**IGI**



June 17, 2026  
IGI Report No. **LG808608306**  
**PEAR MODIFIED BRILLIANT**  
9.63 X 5.88 X 3.90 MM  
1.60 CARAT  
FANCY YELLOW  
VVS 2  
66.3%  
61%  
Thick to Very Thick (Faceted)  
Pointed  
VERY GOOD  
EXCELLENT  
NONE  
IGI LG808608306  
Comments: This Laboratory Grown Diamond was created by Chemical Vapor Deposition (CVD) growth process.