



ELECTRONIC COPY

LG808606395
Report verification at igi.org



June 25, 2026

IGI Report Number **LG808606395**

Description **LABORATORY GROWN DIAMOND**

Shape and Cutting Style **PEAR MODIFIED BRILLIANT**

Measurements **8.39 X 5.18 X 3.41 MM**

GRADING RESULTS

Carat Weight **1.06 CARAT**

Color Grade **FANCY YELLOW**

Clarity Grade **VVS 2**

June 25, 2026

IGI Report Number **LG808606395**

Description **LABORATORY GROWN DIAMOND**

Shape and Cutting Style **PEAR MODIFIED BRILLIANT**

Measurements **8.39 X 5.18 X 3.41 MM**

GRADING RESULTS

Carat Weight **1.06 CARAT**

Color Grade **FANCY YELLOW**

Clarity Grade **VVS 2**

ADDITIONAL GRADING INFORMATION

Polish **EXCELLENT**

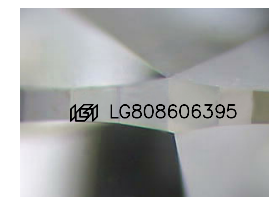
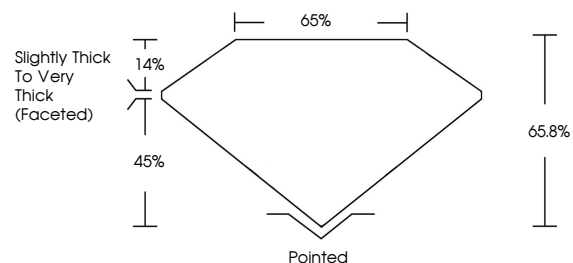
Symmetry **EXCELLENT**

Fluorescence **NONE**

Inscription(s) **IGI LG808606395**

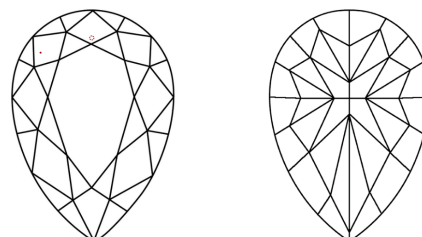
Comments: This Laboratory Grown Diamond was created by Chemical Vapor Deposition (CVD) growth process.

PROPORTIONS



Sample Image Used

CLARITY CHARACTERISTICS



KEY TO SYMBOLS

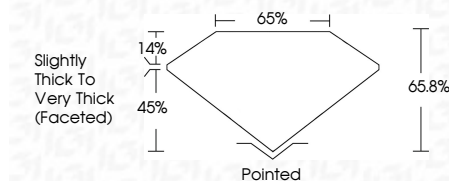
Red symbols indicate internal characteristics.
Green symbols indicate external characteristics.

COLOR

D E F G H I J Faint Very Light Light

CLARITY

| FL | IF | VVS ¹⁻² | VS ¹⁻² | SI ¹⁻² | I ¹⁻³ |
|----------|---------------------|-----------------------------|------------------------|-------------------|------------------|
| Flawless | Internally Flawless | Very Very Slightly Included | Very Slightly Included | Slightly Included | Included |



ADDITIONAL GRADING INFORMATION

Polish **EXCELLENT**

Symmetry **EXCELLENT**

Fluorescence **NONE**

Inscription(s) **IGI LG808606395**

Comments: This Laboratory Grown Diamond was created by Chemical Vapor Deposition (CVD) growth process.



June 25, 2026
IGI Report No. LG808606395
PEAR MODIFIED BRILLIANT
8.39 X 5.18 X 3.41 MM
1.06 CARAT
FANCY YELLOW
VVS 2
65.8%
45%
Slightly Thick To Very Thick (Faceted)
Pointed
EXCELLENT
EXCELLENT
NONE
IGI LG808606395

Comments: This Laboratory Grown Diamond was created by Chemical Vapor Deposition (CVD) growth process.