



LABORATORY GROWN DIAMOND REPORT

June 15, 2026
 IGI Report Number **LG808603910**
 Description **LABORATORY GROWN DIAMOND**
 Shape and Cutting Style **PEAR BRILLIANT**
 Measurements **8.09 X 5.05 X 3.21 MM**

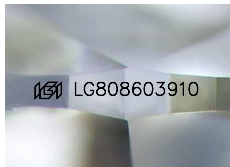
GRADING RESULTS

Carat Weight **0.78 CARAT**
 Color Grade **F**
 Clarity Grade **VS 1**

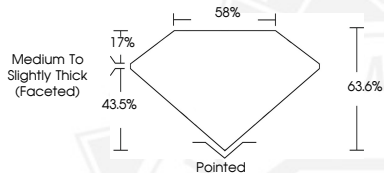
ADDITIONAL GRADING INFORMATION

Polish **EXCELLENT**
 Symmetry **EXCELLENT**
 Fluorescence **NONE**
 Inscription(s) **IGI LG808603910**

Comments: This Laboratory Grown Diamond was created by
 Chemical Vapor Deposition (CVD) growth process.
 Type IIa



Sample Image Used



June 15, 2026
 IGI Report Number **LG808603910**
PEAR BRILLIANT
LABORATORY GROWN DIAMOND
8.09 X 5.05 X 3.21 MM
 Carat Weight **0.78 CARAT**
 Color Grade **F**
 Clarity Grade **VS 1**
 Polish **EXCELLENT**
 Symmetry **EXCELLENT**
 Fluorescence **NONE**
 Inscription(s) **IGI LG808603910**

Comments: This Laboratory Grown
 Diamond was created by
 Chemical Vapor Deposition (CVD)
 growth process. Type IIa



June 15, 2026
 IGI Report Number **LG808603910**
PEAR BRILLIANT
LABORATORY GROWN DIAMOND
8.09 X 5.05 X 3.21 MM
 Carat Weight **0.78 CARAT**
 Color Grade **F**
 Clarity Grade **VS 1**
 Polish **EXCELLENT**
 Symmetry **EXCELLENT**
 Fluorescence **NONE**
 Inscription(s) **IGI LG808603910**

Comments: This Laboratory Grown
 Diamond was created by
 Chemical Vapor Deposition (CVD)
 growth process. Type IIa



THIS DOCUMENT WAS PRODUCED WITH THE FOLLOWING SECURITY MEASURES: SPECIAL DOCUMENT PAPER, INK SCREENS, WATERMARK, BACKGROUND DESIGNS, HOLOGRAM AND OTHER SECURITY FEATURES NOT LISTED AND DO EXCEED DOCUMENT SECURITY INDUSTRY GUIDELINES.