



ELECTRONIC COPY

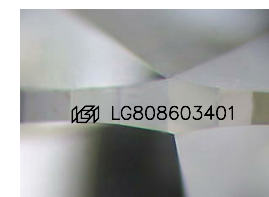
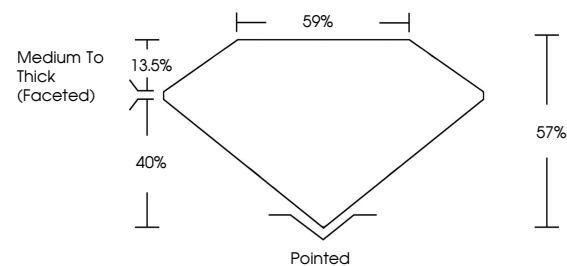
LG808603401
Report verification at igi.org



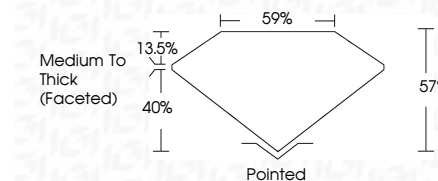
June 9, 2026
IGI Report Number **LG808603401**
Description **LABORATORY GROWN DIAMOND**
Shape and Cutting Style **HEART BRILLIANT**
Measurements **6.44 X 6.96 X 3.97 MM**
GRADING RESULTS
Carat Weight **1.03 CARAT**
Color Grade **D**
Clarity Grade **VVS 2**

June 9, 2026
IGI Report Number **LG808603401**
Description **LABORATORY GROWN DIAMOND**
Shape and Cutting Style **HEART BRILLIANT**
Measurements **6.44 X 6.96 X 3.97 MM**
GRADING RESULTS
Carat Weight **1.03 CARAT**
Color Grade **D**
Clarity Grade **VVS 2**

PROPORTIONS



Sample Image Used



ADDITIONAL GRADING INFORMATION

Polish **EXCELLENT**
Symmetry **EXCELLENT**
Fluorescence **NONE**
Inscription(s) **IGI LG808603401**

Comments: As Grown - No indication of post-growth treatment.
This Laboratory Grown Diamond was created by High Pressure High Temperature (HPHT) growth process. Type II

ADDITIONAL GRADING INFORMATION

Polish **EXCELLENT**
Symmetry **EXCELLENT**
Fluorescence **NONE**
Inscription(s) **IGI LG808603401**
Comments: As Grown - No indication of post-growth treatment.
This Laboratory Grown Diamond was created by High Pressure High Temperature (HPHT) growth process. Type II

COLOR

D E F G H I J Faint Very Light Light

CLARITY

FL	IF	VVS ¹⁻²	VS ¹⁻²	SI ¹⁻²	I ¹⁻³
Flawless	Internally Flawless	Very Very Slightly Included	Very Slightly Included	Slightly Included	Included



IGI



June 9, 2026
IGI Report No. **LG808603401**
HEART BRILLIANT
6.44 X 6.96 X 3.97 MM
1.03 CARAT
Color Grade **D**
Clarity Grade **VVS 2**
Depth **57%**
Table **59%**
Girdle **Medium To Thick (Faceted)**
Culet **Pointed**
Polish **EXCELLENT**
Symmetry **EXCELLENT**
Fluorescence **NONE**
Inscription(s) **IGI LG808603401**
Comments: As Grown - No indication of post-growth treatment.
This Laboratory Grown Diamond was created by High Pressure High Temperature (HPHT) growth process. Type II