



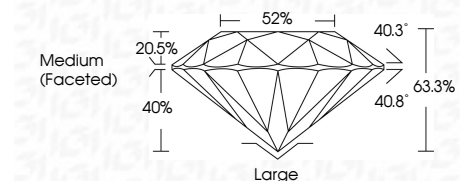
**ELECTRONIC COPY**

LG808603205  
Report verification at igi.org



June 5, 2026  
IGI Report Number **LG808603205**  
Description **LABORATORY GROWN DIAMOND**  
Shape and Cutting Style **OLD EUROPEAN CUT**  
Measurements **7.12 - 7.16 X 4.52 MM**

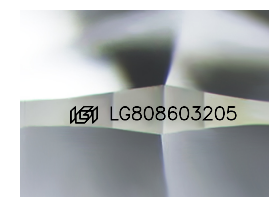
**GRADING RESULTS**  
Carat Weight **1.50 CARAT**  
Color Grade **E**  
Clarity Grade **VS 1**



**ADDITIONAL GRADING INFORMATION**  
Polish **EXCELLENT**  
Symmetry **EXCELLENT**  
Fluorescence **NONE**  
Inscription(s) **IGI LG808603205**  
Comments: This Laboratory Grown Diamond was created by Chemical Vapor Deposition (CVD) growth process. Type IIa

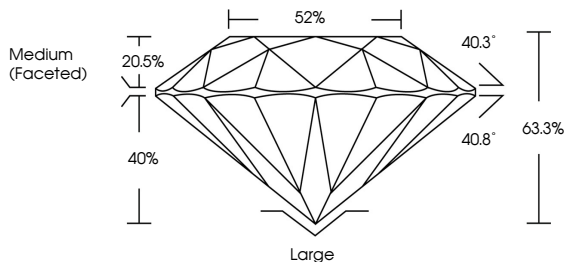


June 5, 2026  
IGI Report No. LG808603205  
**OLD EUROPEAN CUT**  
7.12 - 7.16 X 4.52 MM  
1.50 CARAT  
E  
VS 1  
63.3%  
52%  
40.3%  
40.8%  
20.5%  
63.3%  
40%  
Large  
EXCELLENT  
EXCELLENT  
NONE  
IGI LG808603205  
Comments: This Laboratory Grown Diamond was created by Chemical Vapor Deposition (CVD) growth process. Type IIa

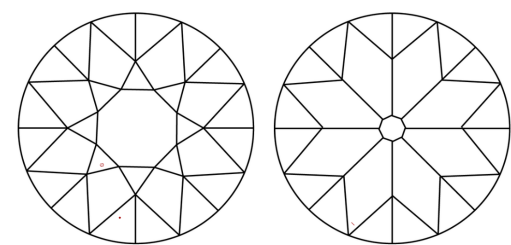


Sample Image Used

**PROPORTIONS**



**CLARITY CHARACTERISTICS**



**KEY TO SYMBOLS**  
Red symbols indicate internal characteristics.  
Green symbols indicate external characteristics.

**COLOR**

D	E	F	G	H	I	J	Faint	Very Light	Light
---	---	---	---	---	---	---	-------	------------	-------

**CLARITY**

FL	IF	VS <sup>1-2</sup>	VS <sup>1-2</sup>	SI <sup>1-2</sup>	I <sup>1-3</sup>
Flawless	Internally Flawless	Very Very Slightly Included	Very Slightly Included	Slightly Included	Included

