



**ELECTRONIC COPY**

LG808602651  
Report verification at [igi.org](http://igi.org)



June 6, 2026  
IGI Report Number **LG808602651**  
Description **LABORATORY GROWN DIAMOND**  
Shape and Cutting Style **SQUARE CUSHION MODIFIED BRILLIANT**  
Measurements **6.46 X 6.40 X 4.09 MM**  
**GRADING RESULTS**  
Carat Weight **1.44 CARAT**  
Color Grade **D**  
Clarity Grade **VVS 2**

**LABORATORY GROWN DIAMOND REPORT**

June 6, 2026  
IGI Report Number **LG808602651**  
Description **LABORATORY GROWN DIAMOND**  
Shape and Cutting Style **SQUARE CUSHION MODIFIED BRILLIANT**  
Measurements **6.46 X 6.40 X 4.09 MM**

**GRADING RESULTS**

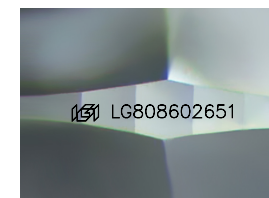
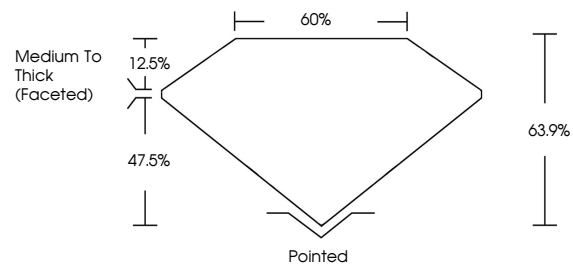
Carat Weight **1.44 CARAT**  
Color Grade **D**  
Clarity Grade **VVS 2**

**ADDITIONAL GRADING INFORMATION**

Polish **EXCELLENT**  
Symmetry **EXCELLENT**  
Fluorescence **NONE**  
Inscription(s) **IGI LG808602651**

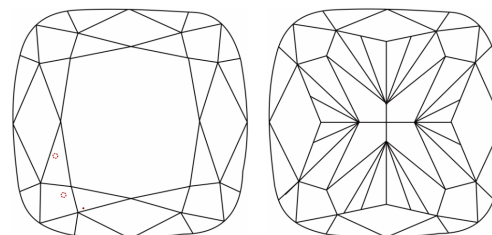
Comments: As Grown - No indication of post-growth treatment.  
This Laboratory Grown Diamond was created by High Pressure High Temperature (HPHT) growth process. Type II

**PROPORTIONS**



Sample Image Used

**CLARITY CHARACTERISTICS**



**KEY TO SYMBOLS**

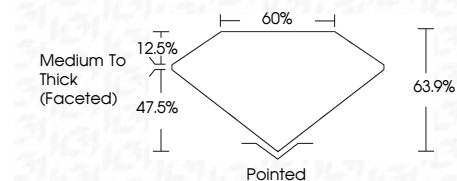
Red symbols indicate internal characteristics.  
Green symbols indicate external characteristics.

**COLOR**

D E F G H I J Faint Very Light Light

**CLARITY**

FL	IF	VVS <sup>1-2</sup>	VS <sup>1-2</sup>	SI <sup>1-2</sup>	I <sup>1-3</sup>
Flawless	Internally Flawless	Very Very Slightly Included	Very Slightly Included	Slightly Included	Included



**ADDITIONAL GRADING INFORMATION**

Polish **EXCELLENT**  
Symmetry **EXCELLENT**  
Fluorescence **NONE**  
Inscription(s) **IGI LG808602651**  
Comments: As Grown - No indication of post-growth treatment.  
This Laboratory Grown Diamond was created by High Pressure High Temperature (HPHT) growth process. Type II



**IGI**



June 6, 2026  
IGI Report No. **LG808602651**  
**SQUARE CUSHION MODIFIED BRILLIANT**  
**6.46 X 6.40 X 4.09 MM**  
Carat Weight **1.44 CARAT**  
Color Grade **D**  
Clarity Grade **VVS 2**  
Depth **63.9%**  
Table **60%**  
Girdle **Medium To Thick (Faceted)**  
Culet **Pointed**  
Polish **EXCELLENT**  
Symmetry **EXCELLENT**  
Fluorescence **NONE**  
Inscription(s) **IGI LG808602651**

Comments: As Grown - No indication of post-growth treatment.  
This Laboratory Grown Diamond was created by High Pressure High Temperature (HPHT) growth process. Type II