



ELECTRONIC COPY

LG807699893
Report verification at igi.org



June 6, 2026

IGI Report Number **LG807699893**

Description **LABORATORY GROWN DIAMOND**

Shape and Cutting Style **ROUND BRILLIANT**

Measurements **6.42 - 6.45 X 3.95 MM**

GRADING RESULTS

Carat Weight **1.01 CARAT**

Color Grade **E**

Clarity Grade **VVS 2**

Cut Grade **IDEAL**

June 6, 2026
IGI Report Number **LG807699893**
Description **LABORATORY GROWN DIAMOND**
Shape and Cutting Style **ROUND BRILLIANT**
Measurements **6.42 - 6.45 X 3.95 MM**

GRADING RESULTS

Carat Weight **1.01 CARAT**

Color Grade **E**

Clarity Grade **VVS 2**

Cut Grade **IDEAL**

ADDITIONAL GRADING INFORMATION

Polish **EXCELLENT**

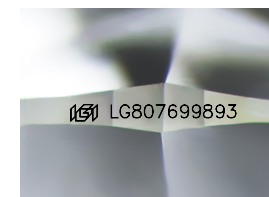
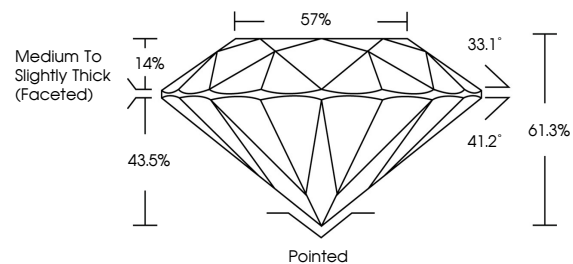
Symmetry **EXCELLENT**

Fluorescence **NONE**

Inscription(s) **IGI LG807699893**

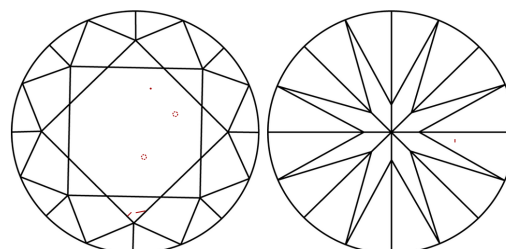
Comments: This Laboratory Grown Diamond was created by Chemical Vapor Deposition (CVD) growth process.
Type IIa

PROPORTIONS



Sample Image Used

CLARITY CHARACTERISTICS



KEY TO SYMBOLS

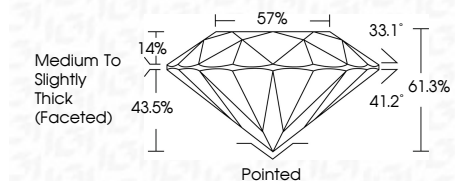
Red symbols indicate internal characteristics.
Green symbols indicate external characteristics.

COLOR

D E F G H I J Faint Very Light Light

CLARITY

FL	IF	VVS ¹⁻²	VS ¹⁻²	SI ¹⁻²	I ¹⁻³
Flawless	Internally Flawless	Very Very Slightly Included	Very Slightly Included	Slightly Included	Included



ADDITIONAL GRADING INFORMATION

Polish **EXCELLENT**

Symmetry **EXCELLENT**

Fluorescence **NONE**

Inscription(s) **IGI LG807699893**

Comments: This Laboratory Grown Diamond was created by Chemical Vapor Deposition (CVD) growth process.
Type IIa



IGI



June 6, 2026	IGI Report No LG807699893	1.01 CARAT	E	Pointed	EXCELLENT	EXCELLENT	NONE	IGI LG807699893
6.42 - 6.45 X 3.95 MM	ROUND BRILLIANT	Color Grade	VVS 2	Depth	61.3%	57%	Medium To Slightly Thick (Faceted)	None
		Clarity Grade	IDEAL	Cut Grade	IDEAL	61.3%	57%	None
		Table	57%	Grade	Medium To Slightly Thick (Faceted)			
		Culet	None	Polish	EXCELLENT	Symmetry	EXCELLENT	Fluorescence
		Symmetry	EXCELLENT	Inscriptions(s)	IGI LG807699893			

Comments: This Laboratory Grown Diamond was created by Chemical Vapor Deposition (CVD) growth process.
Type IIa