



**ELECTRONIC COPY**

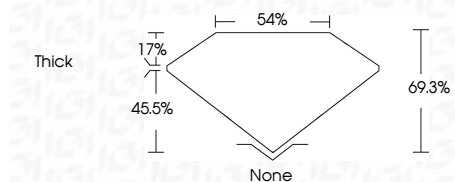
LG807698434  
Report verification at igi.org



June 11, 2026  
IGI Report Number **LG807698434**  
Description **LABORATORY GROWN DIAMOND**  
Shape and Cutting Style **MODIFIED PEAR STEP CUT**  
Measurements **15.66 X 7.49 X 5.19 MM**

**GRADING RESULTS**

Carat Weight **4.18 CARATS**  
Color Grade **E**  
Clarity Grade **VVS 2**



**ADDITIONAL GRADING INFORMATION**

Polish **EXCELLENT**  
Symmetry **EXCELLENT**  
Fluorescence **NONE**  
Inscription(s) **IGI LG807698434**  
Comments: This Laboratory Grown Diamond was created by Chemical Vapor Deposition (CVD) growth process. Type IIa



June 11, 2026  
IGI Report No LG807698434  
**MODIFIED PEAR STEP CUT**  
15.66 X 7.49 X 5.19 MM  
4.18 CARATS  
E  
VVS 2  
69.3%  
54%  
Thick  
None  
EXCELLENT  
EXCELLENT  
NONE  
IGI LG807698434  
Comments: This Laboratory Grown Diamond was created by Chemical Vapor Deposition (CVD) growth process. Type IIa

June 11, 2026  
IGI Report Number **LG807698434**  
Description **LABORATORY GROWN DIAMOND**  
Shape and Cutting Style **MODIFIED PEAR STEP CUT**  
Measurements **15.66 X 7.49 X 5.19 MM**

**GRADING RESULTS**

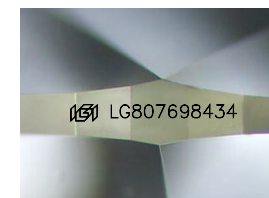
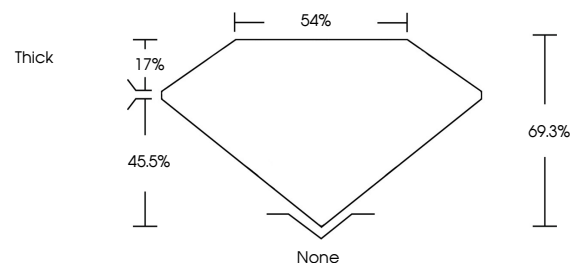
Carat Weight **4.18 CARATS**  
Color Grade **E**  
Clarity Grade **VVS 2**

**ADDITIONAL GRADING INFORMATION**

Polish **EXCELLENT**  
Symmetry **EXCELLENT**  
Fluorescence **NONE**  
Inscription(s) **IGI LG807698434**

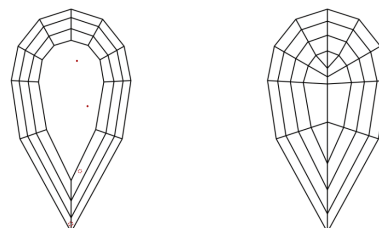
Comments: This Laboratory Grown Diamond was created by Chemical Vapor Deposition (CVD) growth process. Type IIa

**PROPORTIONS**



Sample Image Used

**CLARITY CHARACTERISTICS**



**KEY TO SYMBOLS**

Red symbols indicate internal characteristics.  
Green symbols indicate external characteristics.

**COLOR**

D E F G H I J Faint Very Light Light

**CLARITY**

FL	IF	VVS <sup>1-2</sup>	VS <sup>1-2</sup>	SI <sup>1-2</sup>	I <sup>1-3</sup>
Flawless	Internally Flawless	Very Very Slightly Included	Very Slightly Included	Slightly Included	Included

