



June 13, 2026

IGI Report Number **LG807697694**

OVAL BRILLIANT

LABORATORY GROWN DIAMOND

7.19 X 5.13 X 3.34 MM

Carat Weight **0.79 CARAT**

Color Grade **M**

Clarity Grade **VVS 2**

Polish **EXCELLENT**

Symmetry **EXCELLENT**

Fluorescence **NONE**

Inscription(s) **IGI LG807697694**

Comments: This Laboratory Grown Diamond was created by Chemical Vapor Deposition (CVD) growth process. Type IIa Faint Brown

LABORATORY GROWN DIAMOND REPORT

June 13, 2026

IGI Report Number

LG807697694

Description

LABORATORY GROWN DIAMOND

Shape and Cutting Style

OVAL BRILLIANT

Measurements

7.19 X 5.13 X 3.34 MM

GRADING RESULTS

Carat Weight

0.79 CARAT

Color Grade

M

Clarity Grade

VVS 2

ADDITIONAL GRADING INFORMATION

Polish

EXCELLENT

Symmetry

EXCELLENT

Fluorescence

NONE

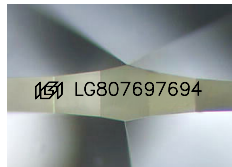
Inscription(s)

IGI LG807697694

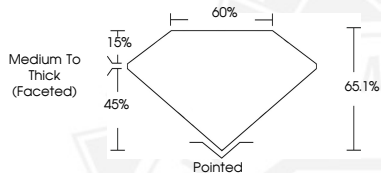
Comments: This Laboratory Grown Diamond was created by Chemical Vapor Deposition (CVD) growth process.

Type IIa

Faint Brown



Sample Image Used



June 13, 2026

IGI Report Number **LG807697694**

OVAL BRILLIANT

LABORATORY GROWN DIAMOND

7.19 X 5.13 X 3.34 MM

Carat Weight **0.79 CARAT**

Color Grade **M**

Clarity Grade **VVS 2**

Polish **EXCELLENT**

Symmetry **EXCELLENT**

Fluorescence **NONE**

Inscription(s) **IGI LG807697694**

Comments: This Laboratory Grown Diamond was created by Chemical Vapor Deposition (CVD) growth process. Type IIa Faint Brown



THIS DOCUMENT WAS PRODUCED WITH THE FOLLOWING SECURITY MEASURES: SPECIAL DOCUMENT PAPER, INK SCREENS, WATERMARK, BACKGROUND DESIGNS, HOLOGRAM AND OTHER SECURITY FEATURES NOT LISTED AND DO EXCEED DOCUMENT SECURITY INDUSTRY GUIDELINES.