



June 6, 2026

IGI Report Number **LG807697684**

**ROUND BRILLIANT  
LABORATORY GROWN DIAMOND  
6.05 - 6.07 X 3.75 MM**

Carat Weight **0.85 CARAT**  
Color Grade **E**  
Clarity Grade **I.F.**  
Cut Grade **IDEAL**  
Polish **EXCELLENT**  
Symmetry **EXCELLENT**  
Fluorescence **NONE**  
Inscription(s) **IGI LG807697684**

Comments: As Grown - No indication of post-growth treatment. This Laboratory Grown Diamond was created by High Pressure High Temperature (HPHT) growth process. Type II

**LABORATORY GROWN DIAMOND REPORT**

June 6, 2026  
IGI Report Number **LG807697684**  
Description **LABORATORY GROWN DIAMOND**  
Shape and Cutting Style **ROUND BRILLIANT**  
Measurements **6.05 - 6.07 X 3.75 MM**

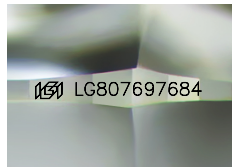
**GRADING RESULTS**

Carat Weight **0.85 CARAT**  
Color Grade **E**  
Clarity Grade **INTERNALLY FLAWLESS**  
Cut Grade **IDEAL**

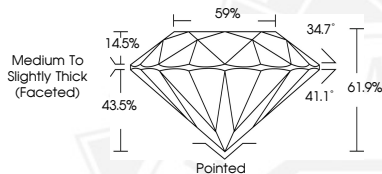
**ADDITIONAL GRADING INFORMATION**

Polish **EXCELLENT**  
Symmetry **EXCELLENT**  
Fluorescence **NONE**  
Inscription(s) **IGI LG807697684**

Comments: As Grown - No indication of post-growth treatment. This Laboratory Grown Diamond was created by High Pressure High Temperature (HPHT) growth process. Type II



Sample Image Used



June 6, 2026

IGI Report Number **LG807697684**

**ROUND BRILLIANT  
LABORATORY GROWN DIAMOND  
6.05 - 6.07 X 3.75 MM**

Carat Weight **0.85 CARAT**  
Color Grade **E**  
Clarity Grade **I.F.**  
Cut Grade **IDEAL**  
Polish **EXCELLENT**  
Symmetry **EXCELLENT**  
Fluorescence **NONE**  
Inscription(s) **IGI LG807697684**

Comments: As Grown - No indication of post-growth treatment. This Laboratory Grown Diamond was created by High Pressure High Temperature (HPHT) growth process. Type II



THIS DOCUMENT WAS PRODUCED WITH THE FOLLOWING SECURITY MEASURES: SPECIAL DOCUMENT PAPER, INK SCREENS, WATERMARK, BACKGROUND DESIGNS, HOLOGRAM AND OTHER SECURITY FEATURES NOT LISTED AND DO EXCEED DOCUMENT SECURITY INDUSTRY GUIDELINES.