



ELECTRONIC COPY

LG807696490
Report verification at igi.org



June 10, 2026
IGI Report Number **LG807696490**
Description **LABORATORY GROWN DIAMOND**
Shape and Cutting Style **OLD EUROPEAN CUT**
Measurements **10.81 - 10.86 X 6.87 MM**
GRADING RESULTS
Carat Weight **5.43 CARATS**
Color Grade **D**
Clarity Grade **VVS 2**

June 10, 2026
IGI Report Number **LG807696490**
Description **LABORATORY GROWN DIAMOND**
Shape and Cutting Style **OLD EUROPEAN CUT**
Measurements **10.81 - 10.86 X 6.87 MM**

GRADING RESULTS

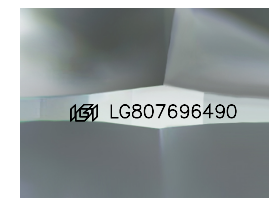
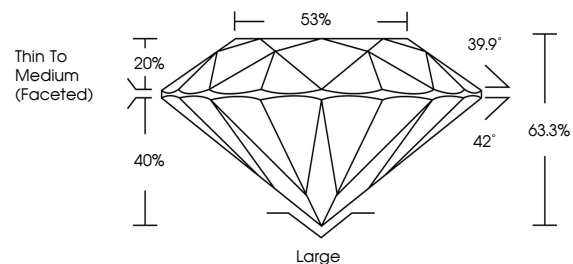
Carat Weight **5.43 CARATS**
Color Grade **D**
Clarity Grade **VVS 2**

ADDITIONAL GRADING INFORMATION

Polish **EXCELLENT**
Symmetry **EXCELLENT**
Fluorescence **NONE**
Inscription(s) **IGI LG807696490**

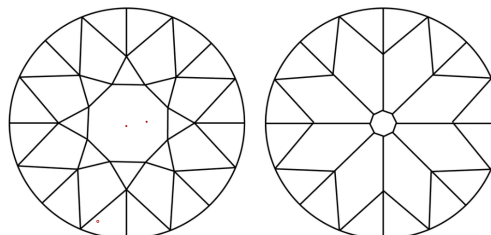
Comments: This Laboratory Grown Diamond was created by Chemical Vapor Deposition (CVD) growth process.
Type IIa

PROPORTIONS



Sample Image Used

CLARITY CHARACTERISTICS



KEY TO SYMBOLS

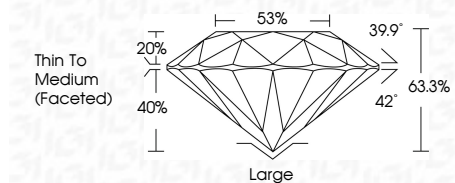
Red symbols indicate internal characteristics.
Green symbols indicate external characteristics.

COLOR

D E F G H I J Faint Very Light Light

CLARITY

FL	IF	VVS ¹⁻²	VS ¹⁻²	SI ¹⁻²	I ¹⁻³
Flawless	Internally Flawless	Very Very Slightly Included	Very Slightly Included	Slightly Included	Included



ADDITIONAL GRADING INFORMATION

Polish **EXCELLENT**
Symmetry **EXCELLENT**
Fluorescence **NONE**
Inscription(s) **IGI LG807696490**
Comments: This Laboratory Grown Diamond was created by Chemical Vapor Deposition (CVD) growth process.
Type IIa



June 10, 2026
IGI Report No LG807696490
OLD EUROPEAN CUT
10.81 - 10.86 X 6.87 MM
5.43 CARATS
D
VVS 2
63.3%
63%
Thin To Medium (Faceted)
Large
EXCELLENT
EXCELLENT
NONE
IGI LG807696490
Comments: This Laboratory Grown Diamond was created by Chemical Vapor Deposition (CVD) growth process.
Type IIa