



**ELECTRONIC COPY**

LG807695837  
Report verification at igi.org



June 12, 2026  
IGI Report Number **LG807695837**  
Description **LABORATORY GROWN DIAMOND**  
Shape and Cutting Style **SQUARE CUSHION MODIFIED BRILLIANT**  
Measurements **8.23 X 7.97 X 5.35 MM**  
**GRADING RESULTS**  
Carat Weight **3.01 CARATS**  
Color Grade **FANCY VIVID BLUE**  
Clarity Grade **VS 1**

**LABORATORY GROWN DIAMOND REPORT**

June 12, 2026  
IGI Report Number **LG807695837**  
Description **LABORATORY GROWN DIAMOND**  
Shape and Cutting Style **SQUARE CUSHION MODIFIED BRILLIANT**  
Measurements **8.23 X 7.97 X 5.35 MM**

**GRADING RESULTS**

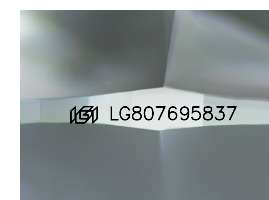
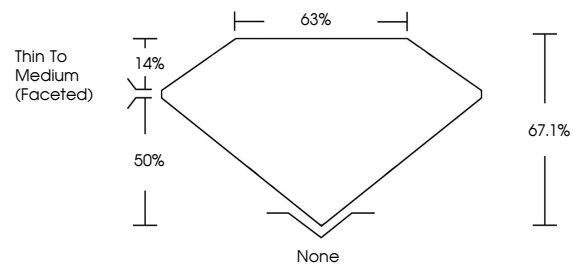
Carat Weight **3.01 CARATS**  
Color Grade **FANCY VIVID BLUE**  
Clarity Grade **VS 1**

**ADDITIONAL GRADING INFORMATION**

Polish **VERY GOOD**  
Symmetry **EXCELLENT**  
Fluorescence **NONE**  
Inscription(s) **IGI LG807695837**

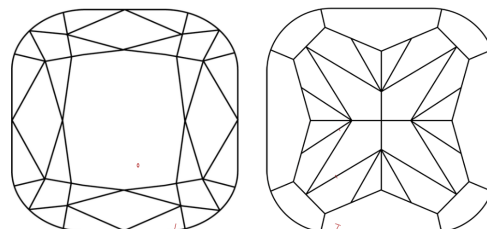
Comments: This Laboratory Grown Diamond was created by Chemical Vapor Deposition (CVD) growth process.  
Indications of post-growth treatment.

**PROPORTIONS**



Sample Image Used

**CLARITY CHARACTERISTICS**



**KEY TO SYMBOLS**

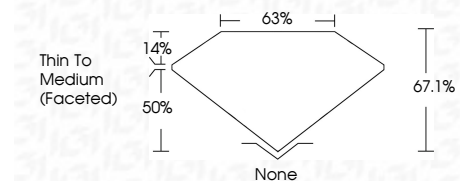
Red symbols indicate internal characteristics.  
Green symbols indicate external characteristics.

**COLOR**

D E F G H I J Faint Very Light Light

**CLARITY**

FL	IF	VS <sup>1-2</sup>	VS <sup>1-2</sup>	SI <sup>1-2</sup>	I <sup>1-3</sup>
Flawless	Internally Flawless	Very Very Slightly Included	Very Slightly Included	Slightly Included	Included



**ADDITIONAL GRADING INFORMATION**

Polish **VERY GOOD**  
Symmetry **EXCELLENT**  
Fluorescence **NONE**  
Inscription(s) **IGI LG807695837**  
Comments: This Laboratory Grown Diamond was created by Chemical Vapor Deposition (CVD) growth process.  
Indications of post-growth treatment.



June 12, 2026  
IGI Report No LG807695837  
**SQUARE CUSHION MODIFIED BRILLIANT**  
8.23 X 7.97 X 5.35 MM  
3.01 CARATS  
FANCY VIVID BLUE  
VS 1  
67.1%  
50%  
None  
VERY GOOD  
EXCELLENT  
NONE  
IGI LG807695837  
Comments: This Laboratory Grown Diamond was created by Chemical Vapor Deposition (CVD) growth process.  
Indications of post-growth treatment.