



ELECTRONIC COPY

LG807695560
Report verification at igi.org



June 9, 2026

IGI Report Number **LG807695560**

Description **LABORATORY GROWN DIAMOND**

Shape and Cutting Style **EMERALD CUT**

Measurements **9.40 X 6.11 X 4.04 MM**

GRADING RESULTS

Carat Weight **2.51 CARATS**

Color Grade **FANCY VIVID BLUE**

Clarity Grade **VS 2**

LABORATORY GROWN DIAMOND REPORT

June 9, 2026

IGI Report Number **LG807695560**

Description **LABORATORY GROWN DIAMOND**

Shape and Cutting Style **EMERALD CUT**

Measurements **9.40 X 6.11 X 4.04 MM**

GRADING RESULTS

Carat Weight **2.51 CARATS**

Color Grade **FANCY VIVID BLUE**

Clarity Grade **VS 2**

ADDITIONAL GRADING INFORMATION

Polish **EXCELLENT**

Symmetry **EXCELLENT**

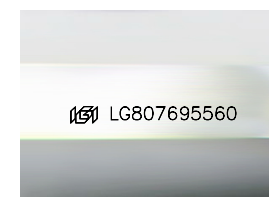
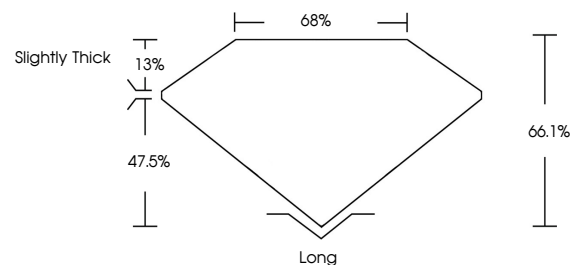
Fluorescence **NONE**

Inscription(s) **IGI LG807695560**

Comments: This Laboratory Grown Diamond was created by Chemical Vapor Deposition (CVD) growth process.

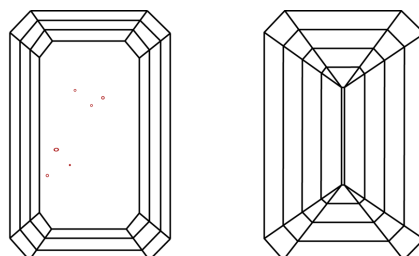
Indications of post-growth treatment.

PROPORTIONS



Sample Image Used

CLARITY CHARACTERISTICS



KEY TO SYMBOLS

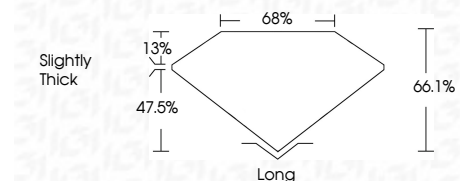
Red symbols indicate internal characteristics.
Green symbols indicate external characteristics.

COLOR

D E F G H I J Faint Very Light Light

CLARITY

FL	IF	VS ¹⁻²	VS ¹⁻²	SI ¹⁻²	I ¹⁻³
Flawless	Internally Flawless	Very Very Slightly Included	Very Slightly Included	Slightly Included	Included



ADDITIONAL GRADING INFORMATION

Polish **EXCELLENT**

Symmetry **EXCELLENT**

Fluorescence **NONE**

Inscription(s) **IGI LG807695560**

Comments: This Laboratory Grown Diamond was created by Chemical Vapor Deposition (CVD) growth process. Indications of post-growth treatment.



IGI



June 9, 2026
IGI Report No LG807695560
EMERALD CUT

2.51 CARATS
Carat Weight
Color Grade FANCY VIVID BLUE
Clarity Grade VS 2
Depth 66.1%
Table 68%
Girdle Slightly Thick

Long
Cutlet EXCELLENT
Polish EXCELLENT
Symmetry EXCELLENT
Fluorescence NONE
Inscription(s) IGI LG807695560

Comments: This Laboratory Grown Diamond was created by Chemical Vapor Deposition (CVD) growth process. Indications of post-growth treatment.